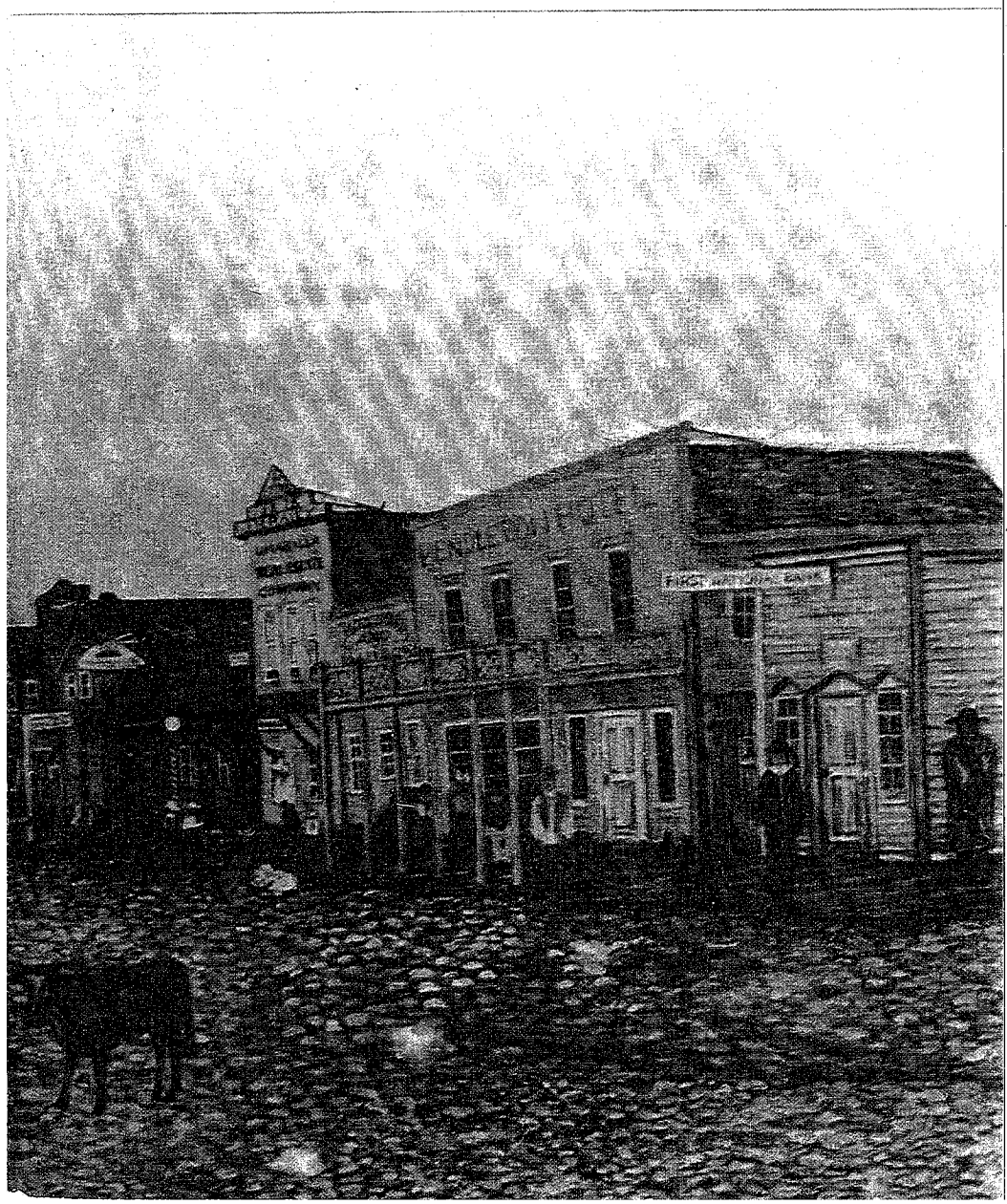
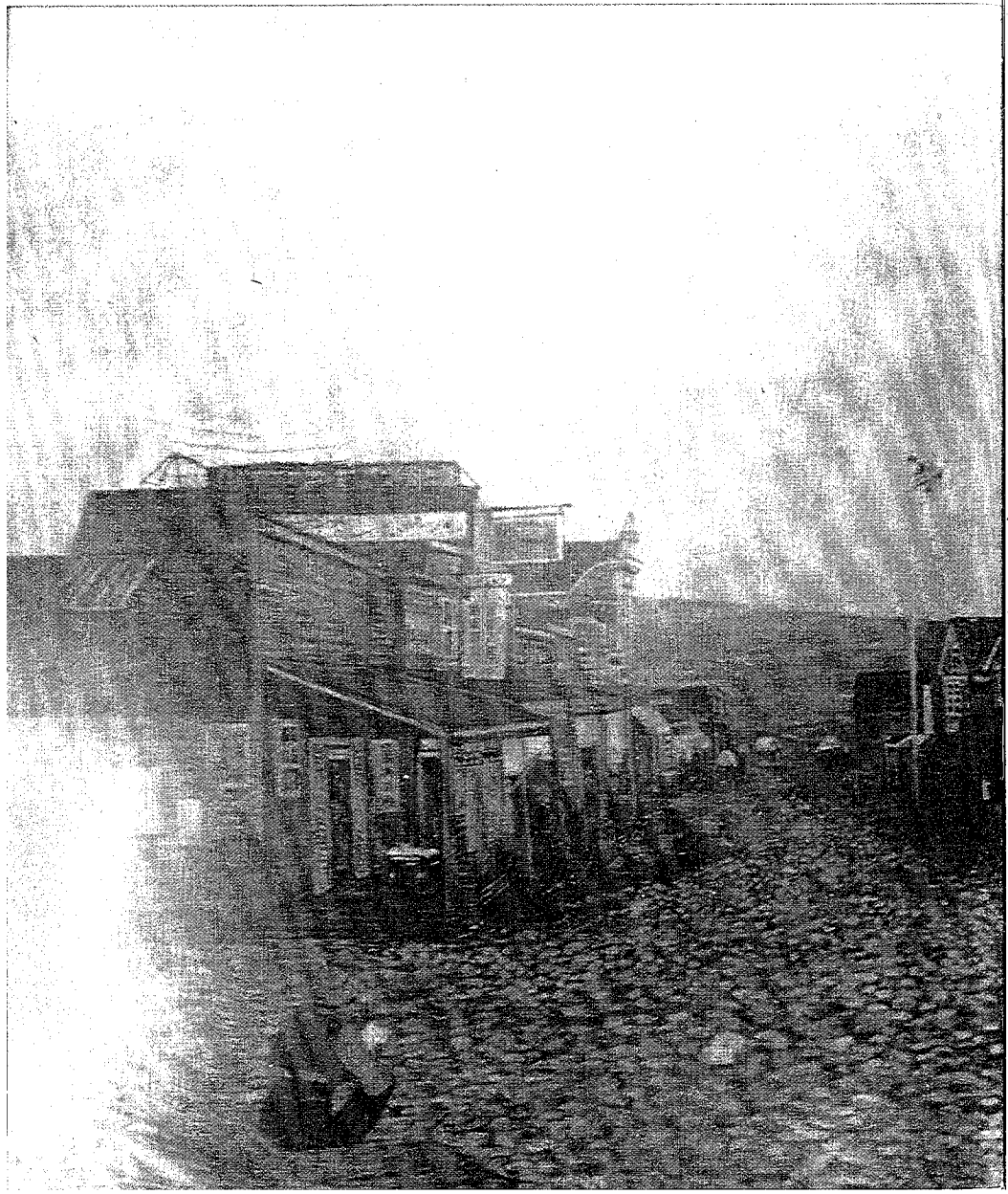


History of the Pendleton Foundation Trust 1928-1981



An original oil painting of early Pendleton in 1868 together with a cowboy photo of downtown Main Street in 1878 and an update on buildings and wood sidewalks in about 1888 inspired the composite tempera painting by Beverly Simpson Raley, wife of James H. Raley, the son of James Roy Raley, one of the founders of the Pendleton Foundation Trust. James Roy Raley was the son of Col. James Henry Raley, Mayor of Pendleton in 1891, who, together with brother, Benjamin Raley, and aunt and uncle, Moses Goodwin and Mrs. Ora Goodwin Raley, were of the first settlers of Pendleton, opening the first Pendleton hotel, named Goodwin's Station, about 1864.



**HISTORY
OF
THE
PENDLETON
FOUNDATION TRUST**

1928-1981

Alfred L. Koeppen, Pendleton citizen, passed away on August 5, 1978, at the age of 77. Al, as his friends called him, had been a Pendleton pioneer and pharmacist, known for his unflagging good nature. During the last six months of his life, as with a great portion of his life, Al had been busily working for Pendleton's community trust, the Pendleton Foundation. Up to a few days prior to his death, Al was actively in the process of researching the community records in order to write a history of the Pendleton Foundation.

Al Koeppen did not get an opportunity to complete his work. But his project survived. Charles Byler, a younger Pendleton pioneer, son of Alex and Mina Lou Byler, and a third-year history student at Whitman College, picked up Al's notes, finished Al's research, and wrote the history that follows.

Al Koeppen was born in Pendleton on April 16, 1902. His father, A. C. Koeppen, with two brothers opened A. C. Koeppen and Bros. pharmacy in 1900. Al worked at the soda fountain of the pharmacy during high school, and entered the business as a pharmacist in 1923 following graduation from Oregon State University. He took over the business in 1936 on the death of his father. Throughout his years in Pendleton, Al devoted a good deal of his time to the Pendleton Foundation, serving as a member of the trust committee for more than 10 years, and as its chairman for 5 of those years.

The present trust committee dedicates this history to Alfred L. Koeppen. His strength, his humor, his dedication to the Pendleton community and the Pendleton Foundation, will be remembered and hopefully followed by all of us.

Steven H. Corey
Secretary
February, 1981

The Pendleton Foundation Trust History

In 1981 Pendletonians could look with satisfaction at the record of an institution that has served the community for 53 years; an institution that, upon its establishment in 1928, was unique in the state of Oregon. This institution is the Pendleton Foundation, a community trust fund that has generously contributed to the city's civic, educational and charitable needs. From its very beginning the Foundation has been praised both within the city and throughout the state as an example of Pendleton's community spirit at its very best, and this praise continues even today.

An examination of the various organizations and projects that have benefited from Pendleton Foundation contributions provides testimony to its value. The city of Pendleton, School District 16-R, the Umatilla County Library, Pendleton Community Hospital, the Rangers Drum and Bugle Corps and the Pendleton Little League are but a few of the many recipients. The gifts have been used to purchase such things as playground equipment, library books, educational video tapes and new robes for the Pendleton High School Choir.

Today the Pendleton Foundation controls over \$400,000 through its trustee banks and is able to give more than \$20,000 in gifts annually. It is clear that the Pendleton Foundation will continue to play a significant role in community growth and improvement for a very long time.

The Pendleton Foundation was officially started on May 10, 1928 with a Resolution and Declaration of Trust. The conception of such an institution had been alive much longer, however, in the minds of those on the Civic Committee of the Pendleton Commercial Association (the equivalent of the present Pendleton Chamber of Commerce). Led by Association manager and committee secretary George Baer, the committee had methodically researched the operations of other trust funds across the nation to find the type that would most effectively suit Pendleton's needs. They sought to provide a means for citizens to contribute to the community by giving a gift in memory of someone who had passed away or as a simple donation. Memorial funds could also be established through wills or by those who were still living and wanted to see the results of their contribution. The donations would have the additional advantage of being tax exempt or, in the case of willed bequests, causing estate and inheritance taxes to be reduced.

The creation of the trust was an outgrowth of Colonel James H. Raley's interest in a trust that had been created by citizens of the city of Cleveland, Ohio. Raley was another of the members of the committee. The language of the Pendleton Foundation Trust, in large measure, followed the provisions of the one earlier created in Cleveland.

The purpose of this new trust was best expressed in the Foundation's Resolution and Declaration:

"-To assist civic and educational undertakings whether now supported by private gifts or public taxation.
-To promote educational and scientific research.
-To improve living conditions or to provide recreation or recreational grounds for all classes.
-For such other civic or public purposes as will best make for the mental, moral and physical improvement of the inhabitants of the City of Pendleton, according to the discretion of the majority in number of a committee to be constituted as hereinafter provided and to be called and known as the Pendleton Foundation Committee."

The organization of the Foundation was based on the model of several trust funds located in eastern cities that had accumulated millions of dollars. The donations would be held by local banks that had been designated as trustees for the fund. The two banks chosen to act in this capacity were the First National Bank and the Inland Empire Bank (the latter, of which in time would be replaced by the United States National Bank).

Each year, it was decided, the income created by interest on the fund would be distributed by the trustees to recipients designated by the Foundation Committee, a group of seven citizens selected for their "knowledge of civic, educational and charitable needs of the City of Pendleton." To prevent any conflicts of interest, no person holding a public office was allowed to serve on the committee, nor were more than two members to be of the same religious denomination. One member was to be appointed by the mayor for a one year term. Another was chosen by the school board for two years and a third was selected by the Board of Managers of the Commercial Association of Pendleton (now the Chamber of Commerce) for three years. The other four were appointed by the Board of Trustees, one to serve for four years and the others to serve for five years. The board of Trustees, which was composed of a representative from both of the trustee banks and the Presiding Judge of the Circuit Court of the State of Oregon, also appointed a secretary to aid the committee.

The Commercial Association chose what was probably the most flexible plan available. Instead of having all contributions earmarked for a particular purpose, the money could be channeled to the most deserving causes each year. Changing economic and social conditions or the disappearance of organizations would not make the trust fund obsolete; the money could simply be used elsewhere. Trust funds with specific purposes stipulated could still be established, but the Foundation Committee reserved the right to divert the income for another purpose if circumstances changed so that compliance with the terms of the donation were made impossible.

With this organizational planning accomplished, the first Foundation Committee was appointed in September, 1928. The Board of Trustees named J. H. Raley, James E. Akey, N. D. Swearingen and James S. Johns to positions. R. M. Crommelin was appointed by the Commercial Association. The mayor selected James A. Fee and the School Board appointed Mrs. E. W. McComas. Mrs. McComas was unable to serve because of an illness, however, and Guy Matlock was chosen to replace her.

The press was quick to praise the new Foundation. An editorial in the Portland Oregon *Journal* of July 23, 1928 noted that Pendleton had established the first permanent trust fund of its type in the state, adding that "Pendleton has done what Portland has long been urged to do." In back of the Foundation, the editorial continued, "is the spirit of Pendleton. Back of it is the nationwide search for the best program, made by George C. Baer, manager of the Pendleton Commercial Association. Back of it is the purpose that the citizens of no other city than Pendleton shall have more lasting safeguards of their philanthropies, or living conditions and opportunities of higher standard." The paper encouraged Portland and other communities to follow Pendleton's example.

The Pendleton *East Oregonian* and its editor, E. B. Aldrich, were enthusiastic supporters from the very start, keeping readers well informed of the Foundation's development. In an editorial entitled "It Will Be a Test" the paper stated that the Foundation would provide a good way for citizens to remember the city by donating money through their wills.

Although the records of the Foundation's early years were lost when the Stangier Brother's Building burned in 1960, apparently there were enough contributions to make the fund a viable one. Undoubtedly the most significant bequest of this period was the

estate of Minnie E. Stillman, a long time Pendleton resident and community leader. The estate, received by the Foundation in 1936, was valued at over \$42,000; an amount that greatly expanded the Foundation's annual income. The income from this donation was used to help purchase such things as the bandstand at Pioneer Park, the base of the Til Taylor statue, a film projector for the senior high school and an oxygen tent for civic use. Minnie Stillman also donated her property on Byers Avenue with the request that it be made into a city park. A portion of her estate was used to purchase additional property for this project. The park finally began to take form in 1945, with the Foundation contributing \$2,294 in 1946 and 1947 for development.

Through the years the Foundation has continued to provide money for improvements in Stillman Park, including \$742 for stove covers in 1962 and 1968 and \$5500 for tennis court lighting in 1978. The Foundation also purchased a marker for the park that reads as follows:

Dedicated in honor of
Minnie E. Stillman
esteemed Pendleton pioneer
who willed her estate to
the people of Pendleton
through the Pendleton Foundation
Presented by the Pendleton Foundation
1961

During the 1940's the bulk of the Foundation's income went to the Pendleton Parks Commission. Of the approximately \$13,700 distributed in that decade, nearly \$10,900 went to the city for improvements in Pendleton parks. This trend continued in the 1950's with \$9,188 of the \$15,400 distributed going to the Parks Commission. During the 1960's, however, the percentage of Foundation income spent on city parks declined significantly; city parks received only \$4,300 of the \$20,400 distributed. This change can probably be explained easily enough - several decades of contributions enabled the city to purchase such things as drinking fountains, playground equipment and wading pools, thus reducing the need for these items in later years.

In 1953, after twenty-five years of existence, the Foundation had accumulated over \$47,000. There had been several generous contributions over the years, but there was a feeling that more could be given by those able to do so. The problem was exemplified in 1956 when not a cent was donated to the fund. The *East Oregonian* took

note of this fact in an editorial of December 31 of that year. "If all the people in other cities who have looked upon the Pendleton Foundation as a model agency were told that not a single contribution was made to the organization in 1956," the editorial stated, "they'd undoubtedly be shocked. We are. And it has set us to thinking that perhaps the general assumption that almost everybody in Pendleton knows about the Pendleton Foundation is false. Perhaps all who must share some responsibility for telling the Pendleton Foundation story are as guilty as those who had the means to give to the organization but did not."

By the 1960's, however, the contribution problem had diminished. Both trustee banks received hundreds of dollars in gifts for the Foundation.

Bequests were another major source of money for the Foundation. Some of the more substantial donations include C. P. Strain's two gifts of \$500 in 1948 and 1949, Edwin B. Aldrich's bequest of \$1000 in 1951, Effie Jean Frazier's contribution of an estate worth \$2,882 in 1952, Florence McCook's gift of \$3,000 in 1968 and Mary C. Allen's bequest of \$1,000 in 1971. Another large contribution was made in 1967, when the Pendleton Masonic Lodge released \$3,818 from the estate of Sarah Thompson to the Foundation.

One means of contribution that became increasingly popular as the Foundation grew older was the special trust fund. These differed from the general fund in that those who established the fund specified how its income was to be spent. The Willetta W. Donert Memorial Fund is an example. Income from this fund was to be given to the Umatilla County Library for the purchase of books. The Kilkenny Fund, started by former Foundation Committee member and chairman John F. Kilkenny, was begun in 1955. Income was to be used by the Umatilla County Library to acquire manuscripts, books and records on the Oregon Territory as well as literature and history of Scotch and Irish origin. The Blue Mountain Community College Library was later named the recipient of this income. In the 1960's the Jack Mulligan Memorial Fund was established, granting money to the County Library for books on American History, business, industry and biography.

Not all of these special funds were formed to aid the local libraries, however. The Roy Raley Memorial Fund contributes money to the city of Pendleton for significant and lasting improvement in Roy Raley Park and, as its name suggests, the Parks and Playgrounds Fund provides money for the betterment of city recreational facilities.

In 1971 an effort was made to give the general fund a boost by changing its name to "The Pendleton Fund" and encouraging past and present Foundation Committee members to donate ten dollars. Envelopes were left in local banks and mortuaries to make gift giving an easier process. The foundation also distributed a letter explaining the fund and its purpose, describing it as a way in which "memorial gifts, gifts honoring special occasions, or donations for public benefit can be made to a fund that will grow and grow, and the earnings be dispensed for community good."

In order to maintain its tax-exempt status as a charitable, non-profit organization, the Foundation passed a resolution in October, 1973. From that time forward income from the fund was re-routed through the Treasurer of the City of Pendleton. The Foundation Committee would still decide what to do with the income, but the decision was subject to the approval of a "new" Management Committee of the Pendleton Civic, Education and Recreation Trust Fund. This committee was composed of the chairperson of the Foundation Committee, the President of the City Council, and the President of the Chamber of Commerce. Income from special funds were not subject to this procedure, so in practice little was changed except that the income distributed by the Foundation was now written on checks from the City Treasurer's office.

In 1974 the Pendleton Foundation received what was far and away its largest donation, the Claude and Bertha Hanscom estate. It was worth over \$255,000, most of which originated from the sale of the Hanscom's farm land near Helix. The estate had been willed by Claude Hanscom to his wife Bertha, who held it until she died. It was then left to his nephew Roy Furnish, coming to the Foundation only after he passed away.

Not long after the Foundation received this bequest it was given two other generous donations bequests of the Eva Fletcher estate of nearly \$30,000 in 1976 and the Florence E. Thompson estate of \$12,299 in 1978. Additionally, a bequest of \$500 from the Elizabeth Murphy estate in 1977, a fraternal contribution of \$500 from Woodmen of the World in 1978, and a memorial to long-time art teacher Paula Pope of \$600 from the teachers at Helen McCune Junior High School in 1979, all were received in the spirit of the Pendleton Foundation Trust. Obviously, the Foundation Committee was now dealing with much larger amounts of money, as a comparison of the income distributed during various years reflects. In 1947, for instance, the Foundation dispersed \$1,294.78. A decade later, in 1957, the amount had climbed only about \$100 to \$1,389.38. In 1967, \$1,854 was distributed, an increase of under \$500 over the ten years. By 1977, however, the in-

come was approximately \$24,500, a dramatic leap largely attributable to the Hanscom donation.

Go almost anywhere in Pendleton and it is possible to see the results of Pendleton Foundation gifts. A merry-go-round at Aldrich Park, a drinking fountain at McKay Creek School, bleachers at the Little League Park, the lighting system in the Vert auditorium, all were purchased with the help of Oregon's oldest community trust fund. But five decades of service is only a start for the Pendleton Foundation. It was designed to aid the community for as long as the need exists, and with support from Pendletonians through gifts and bequests, the list of contributions from this trail-blazing trust fund should continue to grow.

Grants 1939-1980

1939	1578.06 722.50 534.96	Pendleton Parks Commission School District No. 16R Pendleton Parks Commission
1940	2000.00	Pendleton Parks Commission
1941	2000.00	Pendleton Parks Commission
1942	1674.20	Pendleton Parks Commission
1943		
1944	1525.49	Pendleton Parks Commission
1945	1407.36	Pendleton Parks Commission
1946	330.00	Umatilla County Health Unit Purchase of oxygen tent for use of citizens of Pendleton with no charge.
	2000.00	Pendleton Parks Commission For development of Minnie E. Stillman Park.
1947	294.78	(undisbursed balance from 1945) Pendleton Parks Commission For development of Stillman Park.
	1000.00	City of Pendleton Completion of lounge and music room adjoining library.
1948		City of Pendleton For bandstand and bathrooms at Pioneer Park.
1949	1000.00	(including 677.22 from year 1947) City of Pendleton Furnishing and complete lounge and music room adjoining library.
	500.00	School District No. 16R (Return funds from suggested improvement of ventilation of Vert. Unable to add adequate funds.) 16 mm Sound Projector for Senior High School.

1950	573.88	Umatilla County Library For microfilming historical data.	210.63	Apply on cost of drinking fountain for Roy Raley park.
1951	2000.00	Pendleton Parks Commission	878.75	School District No. 16R For 5 slides and one combination of see-saw and slide.
1952	850.00	City of Pendleton Towards cost of wading pool for Sergeant City park.	1958	City of Pendleton For 3 drinking fountains, Pioneer, Til Taylor and Roy Raley parks.
	350.00	City of Pendleton Towards cost of wading pool for E.B. Aldrich Park, or for purchase of additional playground equipment for same park.	630.00	Til Taylor and Roy Raley parks.
			400.00	Addition for drinking fountain at Roy Raley park.
			629.80	Playground equipment, Montee park.
			689.96	Three downtown area drinking fountains.
			365.00	Umatilla County Library For book return to be installed at library entrance.
1953	597.45	City of Pendleton Playground equipment for Sherwood Heights park.	1959	School District No. 16R For purchase of grand piano.
	500.00	City of Pendleton Towards wading pool in E. B. Aldrich park.	377.82	City of Pendleton Marker for Minnie E. Stillman park and playground equipment.
1954	850.00	City of Pendleton Contribution for wading pool in Sherwood Heights park.	1960	Pendleton School District No. 16R For purchase of coat racks for high school cafeteria.
	511.11	City of Pendleton (includes 202.91 from 1952) Towards purchase of playground equipment for Pend-Air Heights park.	951.00	Umatilla County Library For purchase of two lounge chairs and a table.
			255.00	City of Pendleton Additional for purchase of marker for Minnie E. Stillman park.
			277.48	Umatilla County Library Wading pool fencing for Til Taylor park.
			971.00	City of Pendleton Lighting equipment for public tennis courts.
1955		City of Pendleton	1961	Umatilla County Library For purchase of phonograph records.
	300.00	Merry-Go-Round for E. B. Aldrich park.	250.00	City of Pendleton Aid in purchase of marker for Minnie E. Stillman park.
	300.00	Merry-Go-Round for Pend-Air park.	39.42	Umatilla County Library Toward purchase of record player.
	150.00	Drinking fountain for E. B. Aldrich park.	1962	City of Pendleton Covers for stoves in Minnie E. Stillman park.
	375.35	For purchase of two Jungle Gyms.	100.00	
	100.00	Umatilla County Library For one film of story and life of Marian Anderson.	241.85	
1956		City of Pendleton		
	450.00	Purchase of Jungle Gyms.		
	200.00	Fireplace in Pioneer park.		
	150.00	Drinking Fountain in Pioneer Park.		
	431.17	Additional purchase of drinking fountains.		
1957		City of Pendleton		
	150.00	Drinking fountain for Pioneer Park.		
	150.00	Teeter-totter for Roy Raley park.		

	1500.00	City of Pendleton For lighting facilities for tennis courts at high school.
1963	360.59	City of Pendleton Completion of tennis court lighting at the new high school.
	400.00	Purchase of 12 sidewalk disposal cans.
	500.00	Umatilla County Library Carpeting for music room.
	112.24	Umatilla County Library
1964	380.00	City of Pendleton Eight unit swing set for McKay Creek school.
	345.00	Merry-Go-Round for same school playground.
	228.00	Umatilla County Library For purchase of water fountain for use in library.
	175.00	City and School District No. 16R Horizontal ladder for use in McKay Creek Playground.
	773.54	Blue Mt. Community College Library For library public reference books.
1965	200.00	City of Pendleton Water fountain for Sergeant City park.
	700.00	City and School District No. 16R For backstop for McKay Creek playground.
	800.00	Pendleton Babe Ruth Association For aid in construction of restroom facilities in new Babe Ruth ball park.
	371.16	Blue Mt. Community College Books for Blue Mountain Community library.
1966	500.00	City of Pendleton Baseball backstop for Round Up stadium and 3 portable backstops for McKay Creek park.
	150.00	School District No. 16R For purchase of outside drinking fountain for McKay Creek park.
	300.00	Umatilla County Library For unrestricted purchase of books.
	300.00	Blue Mt. Community College For purchase of books for B.M.C.C. library.
	886.39	Pendleton Babe Ruth Assoc. For purchase of seating facilities.

1967	450.00	Pendleton Little League For park-wide underground sprinkling system.
	404.00	City and School district No. 16R Softball backstop for McKay Creek area, and climbing device called "catty caterpillar"
	1000.00	Committee of multi-purpose public address system.
1968	500.00	V.F.W. Covers over stoves at Stillman park.
	600.00	Pendleton Little League Backstop and fencing.
	890.00	City of Pendleton Multipurpose shelter for Sherwood Heights park.
	420.41	Pendleton Babe Ruth Assoc. Retaining wall along north bank of playing field.
1969	500.00	Pendleton Babe Ruth Assoc. Purchase and installation of fencing around park.
	100.00	Later addition.
	500.00	Pendleton Little League Purchase and installation of dugouts and bleachers.
	100.00	Later addition.
	720.00	City of Pendleton Rec. Dept. Purchase of Frontier Outpost to be erected in one of city parks.
	100.00	Later addition.
	498.39	School District No. 16R Replacement of drapes in Vert Auditorium.
	100.00	Later additions.
	100.00	Vert Committee Fans for clubroom. (Original grant was for \$500.00 to be used to apply on air conditioning equipment for clubroom. Since the committee was unable to find funds \$400.00 was returned, and was dispensed in the four \$100.00 additions above.)
1970	671.89	Pendleton Rangers Drum and Bugle Corps Solely for purchase of instruments.

	500.00	Pendleton Little League Improvement of ballpark sprinkler system.
	500.00	City of Pendleton Parks and Recreation For purchase of playground equipment.
	500.00	Pendleton Babe Ruth Assoc. For construction of dressing rooms.
	350.00	Blue Mt. Community College Showcase for new museum.
	6.86	City of Pendleton Parks and Recreation
1971	150.00	Blue Mt. Community College Purchase of show cases for museum.
	500.00	Pendleton Little League To be applied on cost of construction of permanent bleachers at Little League park.
	100.00	Helen McCune Junior High Construction of new bleachers for gymnasium.
	500.00	Added to above fund by motion, sum returned by Vert Committee (not used).
	300.00	City of Pendleton Parks and Recreation For 6 new benches in Roy Raley park.
	500.00	Pendleton Babe Ruth Assoc. Construction of block building for showers and storage at Babe Ruth field.
	447.97	School District No. 16R To be applied toward purchase of new uniforms for high school band.
	300.00	Pendleton Rangers Drum and Bugle Corps Purchase of two soprano bugles.
1972	600.00	City of Pendleton Parks and Recreation Two electric stoves and basketball backboard for Roy Raley park.
	290.00	Pendleton Rangers Drum and Bugle Corps Purchase of a brass baritone.
	300.00	Vert Memorial Council Refurbishment of grand piano in clubroom.
	940.72	City of Pendleton Parks and Recreation To assist in resurfacing and painting of tennis courts.
	320.00	Umatilla County Library Purchase of drinking fountain on lower floor of library.
	940.71	Pendleton Babe Ruth Assoc. Assist in cost of additional bleachers at Robert L. White baseball park.

1973

Requests read but no gifts made because of problem in qualifying.

1974	500.00	Pendleton Round-Up Hall of Fame To aid in expense of construction of their new building.
	529.50	Vert Committee Electrical installation costs for new light fixtures.
	325.00	Rangers of E.O. For purchase of a bass baritone horn.
	550.00	Helen McCune Junior High For purchase of bleacher in gymnasium.
	396.45	Pendleton Community Schools Purchase of basketball-standards, card tables and office equipment.
	60.00	Blue Mt. Council, Boy Scouts Course fee to permit scoutmaster to attend Woodbadge Training.
	650.00	Pendleton Little League Assist in continuation of construction of concrete block building at Little League park.
	650.00	Pendleton Swim Association Provide season swimming tickets for underprivileged children, and other purposes.
	500.00	City of Pendleton Parks and Recreation Assist in resurfacing Stillman Park tennis courts.
	200.00	Umatilla County Library For purchase of "large type" books.
	210.00	Blue Mt. Community College To assist in museum activities.
1975	200.00	Arts Council of Pendleton To be used to help in expenses of annual Arts Festival.
	300.00	Blue Mt. Community College To assist in museum activities.
	700.00	City of Pendleton Parks and Recreation Purchase of playground equipment.
	250.00	Pendleton Child Care Center Purchase of educational material to enrich its program.

600.00	Rangers of E.O. Used only toward purchase of 1½ ton truck with van body (to be returned if not used within one year).
635.23	Umatilla County Library For use in initiating "Reading is Fundamental" within Pendleton community only.
300.00	Pendleton Swim Association To provide season tickets for under-privileged children and other purposes.
250.00	Civil Air Patrol For use in first aid programs of a permanent nature.
74.18	Umatilla County Library
1976	
7500.00	School District 16R New lighting system for Vert auditorium.
4000.00	Pendleton Optimist Club Toward purchase of wrestling mat.
2675.29	Pendleton High School Choir Toward purchase of new choir robes.
1000.00	St. Anthony's Hospital Audio-visual patient-teaching equipment.
1000.00	Pendleton Community Hospital Same.
10,000.00	Blue Mt. Community College Provide lighting for new tennis courts on college campus.
250.00	Pendleton Child Care Center For educational and instructive materials.
338.90	Pendleton Optimist Club Youth football program.
500.00	Umatilla County Historical Society Publication of history of Pendleton.
200.00	Civil Air Patrol
150.00	"Picture Ladies" Organization promoting art in public schools.
275.75	Pendleton Community Schools For archery equipment.
500.00	Pendleton Babe Ruth Association
1400.00	Washington School Playground equipment.
1019.00	Umatilla County Library Aid "Reading is Fundamental" program.
1950.00	Pendleton Parks and Recreation Playground equipment and portable bleachers.

500.00	Blue Mt. Community College museum
600.00	Agency On Aging For equipment for "Meals On Wheels" program.
189.21	Umatilla County Library Purchase of specialty books.
1977	
5000.00	School District No. 16R Completion of new lighting for Vert auditorium.
250.00	Umatilla County Historical Society Preserving Pendleton history.
150.00	Pendleton Fire Dept. Hose Co. No. 1 Purchase of 2500 stickers for use on homes where children and invalids are living.
1000.00	Blue Mt. Community College Manual lift for lowering handicapped into swimming pool.
250.00	Pendleton Babe Ruth Association Part of cost of all-weather batting station.
500.00	Pendleton Jaycees To aid in improving sound at armory.
775.00	McKay Creek School Playground equipment.
1848.00	Pendleton High School Aid in purchase of moveable bleacher for high school gym.
600.00	Blue Mt Community College Museum.
250.00	Pendleton Little League Capital improvements.
1200.00	School District No. 16R Aid in purchase of adequate sound system for high school auditorium.
2000.00	Bicentennial Parks Committee To provide sprinkle system, shrubs, trees and lawn for Armory parking lot.
200.00	Pendleton Arts Council Promoting arts.
195.00	St. Anthony Hospital Video tape cassette, "What Is Diabetes?" Use to be extended to Community Hospital.
297.60	Pendleton Community Schools Cooking appliances.
1000.00	Retired Senior Volunteer Toward purchase of used automobile for transporting elderly.
400.00	Pendleton Child Care Center Aid in purchasing institutional dishwasher.

	500.00	Pendleton Round-Up Hall of Fame Permanent improvements.
	875.00	Umatilla County Library Books and film projector.
	2000.00	Pendleton Community Concerts Assoc.
	1100.00	Pendleton Parks and Recreation Wind screens at swimming pool.
	1000.00	Pendleton Swim Assoc. Automatic timing system.
	500.00	Pendleton Community Hospital Optics projector, for teaching class and consumer groups.
1978	300.00	Pendleton Firefighters Assoc. Slide projector and photo supplies. Training aids for both fire and ambulance services.
	1000.00	Pendleton Hose Company No. 1 Toward purchase of "Jaws of Life" rescue tool, to upgrade emergency medical service.
	2450.00	Pendleton Parks and Recreation Playing equipment, backstops and soccer goals.
	5500.00	Pendleton Parks and Recreation Lighting two tennis courts at Stillman park.
	400.00	Hawthorne School Bunker Hill Climber.
	199.00	John Murray Junior High Tennis court nets.
	400.00	McKay Creek Elementary School Soccer goals and nets.
	3854.00	Helen McCune Junior High New drapes, curtains and carpeting for Vert Little Theater.
	4625.00	Pendleton Parks and Recreation Electronic timing equipment. Co-operative use by Pendleton schools, Swim Assoc. and Parks and Recreation
	750.00	Pendleton Jaycees Aid in new sound system for Pendleton Armory.
	1456.00	Pendleton Arts Council Recovering art boards.
	897.00	Pendleton Community Schools Figurine to teach cardio-pulmonary resuscitation.
	1000.00	St. Anthony Hospital Medical educational video tape.

	1000.00	Pendleton Babe Ruth Assoc. To replace scoreboards.
	350.00	Blue Mt. Community College museum
	1000.00	School District No. 16R Lighted area for joggers.
1979	500.00	Pendleton Babe Ruth Assoc. Fencing a new field for 13 yr. olds
	530.95	Pendleton Community Schools New range for cooking-baking-nutrition programs.
	500.00	Sherwood Heights Elementary School Parents Club Safety pads for the playground equipment.
	500.00	Elementary School Parents of Pendleton Basketball backboard adapters for use by elementary children in all Pendleton grade schools.
	5520.00	Pendleton Senior High School Purchase and installation of two sections of bleachers for the high school gymnasium.
	755.00	Pendleton Senior High School Athletic Dept. Film Projector.
	4498.00	City of Pendleton Purchase of playground equipment for the new park on McKay Creek.
	564.00	Pendleton Community Hospital Hospital equipment.
	1000.00	Knights of Pythias New uniforms for the Pop Warner Football program.
	437.95	Pendleton Child Care Center Purchase of a Playside, film strip projector and work bench.
	1000.00	St. Anthony Hospital Video Tapes for patient education.
	900.00	American Red Cross, Umatilla County Chapter Recording Resusci-Anne for use in the Pendleton CPR program.
	1450.00	Umatilla County Library For use towards the purchase of a copier.
	3500.00	Pendleton Swim Assoc. Purchase of lane ropes.
1980	7,500.00	Pendleton Foundation Trust (for Centennial)
	783.77	Pendleton Foundation Trust (for history)

750.00	Educational Service District	Creating 30 minute slide presentation on Pendleton History
5,000.00	Pendleton Woman's Club	Constructing wheelchair ramp for Vert Clubroom and little theater
500.00	Umatilla County Historical Society	Publishing summer issue of "Pioneer Trails" devoted totally to Pendleton History
1,000.00	St. Anthony Hospital	Purchase additional video tapes for closed circuit television patient education
1,000.00	Pendleton Community Hospital	Toward purchase of arrhythmia recording Resusi-Anne.
3,381.75	City of Pendleton	Purchase 12 heavy-duty, attractive receptacles for downtown Pendleton
2,900.00	Pendleton Senior High School	Additional set of bleachers for high school gym
500.00	Pendleton Swim Association	Purchase canvas bags to store lane ropes
800.00	Pendleton Little League	Purchasing girl's softball equipment
1981 5,875.00	Pendleton School District 16R	Refurbish Baldwin Grand Piano located on stage at the Vert Auditorium
4,000.00	Pendleton Babe Ruth Association	Fencing the entire Babe Ruth facility
3,000.00	Pendleton Senior High School	An additional set of bleachers for high school gymnasium
3,900.00	Blue Mountain Community College	Toward providing spectator shelters for lower tennis courts
1,250.00	Blue Mtn Council of Boy Scouts of America	To purchase audio-visual equipment for training scout leaders
884.54	Pendleton Community Schools	Purchase a table and chairs
1,000.00	Knights of Pythias	Purchase football uniforms for youth football program
1,000.00	Rocket Square Dance Club of Pendleton	Purchase new turntable and public address system
1,000.00	St. Anthony Hospital	Purchase set of six video tapes on diabetes and film strips for comprehensive patient education program
500.00	Pendleton Community Hospital	Purchase video cassette health education programs
	Firemans Fund	
410.00		Purchase Kendrick extrication device
4,788.00		Purchase portable heart monitor

continued on page 30

Trust Committee Members Since 1939*

1939	John F. Kilkenny, Chr. J. D. McKee James. A. Fee	H. R. Brock Max Baer	Dr. H. J. Kavanaugh J. J. Hamley
	Roy W. Ritner, Sec.		
1940	Creagh Brennan, Chr. H. R. Brock John F. Kilkenny	A. L. Koeppen Dr. H. J. Kavanaugh	Max Baer
1941	Creagh Brennan, Chr. A. L. Koeppen Max Baer	Dr. H. J. Kavanaugh John Kilkenny	J. D. McKee H. R. Brock
1942	Dr. H. J. Kavanaugh, Chr. Creagh Brennan John Kilkenny	H. R. Brock J. D. McKee	A. L. Koeppen Sam Gorfkle
	Charles Griffin, Sec.		
1943-1944	Dr. H. J. Kavanaugh, Chr. Creagh Brennan John Kilkenny	H. R. Brock J. D. McKee	A. L. Koeppen Sam Gorfkle
	Charles Griffin, Sec.		
1945	A. L. Koeppen, Chr. Creagh Brennan Sam Gorfkle	J. D. McKee Dr. H. J. Kavanaugh	John F. Kilkenny H. R. Brock
1945	A. L. Koeppen, Chr. Creagh Brennan Sam Gorfkle	J. D. McKee Dr. H. J. Kavanaugh	John F. Kilkenny H. R. Brock
1947	A. L. Koeppen, Chr. Creagh Brennan Sam Gorfkle	J. D. McKee Dr. H. J. Kavanaugh	John F. Kilkenny H. R. Brock
1948	A. L. Koeppen, Chr. Creagh Brennan Sam Gorfkle	J. D. McKee Dr. H. J. Kavanaugh	John F. Kilkenny H. R. Brock
1949	A. L. Koeppen, Chr. Creagh Brennan Sam Gorfkle	H. R. Brock J. D. McKee	Dr. J. H. Kavanaugh B. D. Isaminger
1950	J. D. McKee, Chr. Bessie McCormach Sam Gorfkle	A. L. Koeppen B. D. Isaminger	H. R. Brock Alfred F. Cunha

(*no record available of members prior to 1939)

1951 J. D. McKee, Chr.
Bessie McCormmach A. L. Koeppen H. R. Brock
Sam Gorfkle B. D. Isaminger Alfred F. Cunha

1952 Alfred F. Cunha, Chr.
Sam Gorfkle J. D. McKee B. D. Isaminger
Bessie McCormmach Ruth Anne Mulligan J. David Hamley
Charles E. Burnett, Sec.

1953 Alfred F. Cunha, Chr.
Sam Gorfkle J. D. McKee B. D. Isaminger
Bessie McCormmach Ruth Anne Mulligan J. David Hamley
Charles E. Burnett, Sec.

1954 Alfred F. Cunha, Chr.
Sam Gorfkle J. D. McKee B. D. Isaminger
Bessie McCormmach Ruth Anne Mulligan J. David Hamley
Charles E. Burnett, Sec.

1955 Alfred F. Cunha, Chr.
Sam Gorfkle J. D. McKee B. D. Isaminger
Bessie McCormmach Ruth Anne Mulligan J. David Hamley
Charles E. Burnett, Sec.

1956 Alfred F. Cunha, Chr.
Sam Gorfkle J. D. McKee B. D. Isaminger
Bessie McCormmach Ruth Anne Mulligan J. David Hamley
Charles E. Burnett, Sec.

1957 Alfred F. Cunha, Chr.
Sam Gorfkle J. D. McKee B. D. Isaminger
Bessie McCormmach Ruth Anne Mulligan J. David Hamley
Charles E. Burnett, Sec.

1958 Alfred F. Cunha, Chr.
John M. Carroll E. A. Fanshier Robert M. Sussman
J. David Hamley Bessie McCormmach Ruth Anne Mulligan
Charles E. Burnett, Sec.

1959 Alfred F. Cunha, Chr.
John M. Carroll E. A. Fanshier Robert M. Sussman
J. David Hamley Bessie McCormmach Ruth Anne Mulligan
Charles E. Burnett, Sec.

1960 Alfred F. Cunha, Chr.
E. A. Fanshier R. M. Sussman Bessie McCormmach
Ruth Anne Mulligan J. David Hamley J. P. French
Robert N. Funk, Sec.

1961 Alfred F. Cunha, Chr.
E. A. Fanshier R. M. Sussman Bessie McCormmach
Ruth Anne Mulligan J. David Hamley J. P. French
Robert N. Funk, Sec.

1962 Alfred F. Cunha, Chr.
E. A. Fanshier R. M. Sussman Bessie McCormmach
Ruth Anne Mulligan J. David Hamley J. P. French
Robert N. Funk, Sec.

1963 Alfred F. Cunha, Chr.
E. A. Fanshier R. M. Sussman Bessie McCormmach
Ruth Anne Mulligan J. David Hamley J. P. French
Robert E. O'Rourke, Sec.

1964 Alfred F. Cunha, Chr.
E. A. Fanshier R. M. Sussman Bessie McCormmach
Ruth Anne Mulligan J. David Hamley J. P. French
Robert E. O'Rourke, Sec.

1965 Alfred F. Cunha, Chr.
E. A. Fanshier Robert M. Sussman Bessie McCormmach
J. W. Forrester, Jr. J. David Hamley Dr. Jules F. Bittner
Robert T. Mautz, Sec.

1966 Alfred F. Cunha, Chr.
E. A. Fanshier Robert M. Sussman Bessie McCormmach
J. W. Forrester, Jr. J. David Hamley Dr. Jules F. Bittner
Robert T. Mautz, Sec.

1967 Alfred F. Cunha, Chr.
E. A. Fanshier Robert M. Sussman Bessie McCormmach
J. W. Forrester, Jr. J. David Hamley Dr. Jules F. Bittner
Robert T. Mautz, Sec.

1968 Alfred F. Cunha, Chr.
E. A. Fanshier Robert M. Sussman Bessie McCormmach
J. W. Forrester, Jr. Jr. David Hamley Dr. Jules F. Bittner
Raley Peterson, Sec.

1969 Dr. Jules F. Bittner, Chr.
J. David Hamley A. L. Koeppen R. M. Sussman
Bessie McCormmach E. A. Fanshier J. W. Forrester, Jr.
Raley Peterson, Sec.

1970 Dr. Jules F. Bittner, Chr.
 J. David Hamley A. L. Koeppen R. M. Sussman
 Bessie McCormmach E. A. Fanshier J. W. Forrester, Jr.
 Raley Peterson, Sec.

1971 Dr. Jules F. Bittner, Chr.
 J. David Hamley A. L. Koeppen R. M. Sussman
 Bessie McCormmach E. A. Fanshier J. W. Forrester, Jr.
 Raley Peterson, Sec.

1972 Dr. Jules F. Bittner, Chr.
 J. David Hamley A. L. Koeppen R. M. Sussman
 Bessie McCormmach E. A. Fanshier J. W. Forrester, Jr.
 Raley Peterson, Sec.

1973 Dr. J. F. Bittner, Chr.
 J. David Hamley R. M. Sussman E. A. Fanshier
 Dr. John McBee Eva Wahl Richard Glenn
 Raley Peterson, Sec.

1974 Dr. J. F. Bittner, Chr.
 J. David Hamley R. M. Sussman E. A. Fanshier
 Dr. John McBee Eva Wahl Richard Glenn
 Steven H. Corey, Sec.

1975 J. David Hamley, Chr.
 Dr. J. F. Bittner Robert Sussman E. A. Fanshier
 Richard Glenn Eva Wahl Dr. John McBee
 Steven H. Corey, Sec.

1976 J. David Hamley, Chr.
 Dr. J. F. Bittner Robert Sussman E. A. Fanshier
 Richard Glenn Eva Wahl Dr. John McBee
 Steven H. Corey, Sec.

1977 Eva Wahl, Chr.
 J. David Hamley Richard Glenn E. A. Fanshier
 Dr. J. F. Bittner Robert Sussman Dr. John McBee
 Steven H. Corey, Sec.

1978 Eva Wahl, Chr.
 J. David Hamley Richard Glenn E. A. Fanshier
 Dr. J. F. Bittner Robert Sussman Dr. John McBee
 Steven H. Corey, Sec.

1979 Dr. John McBee, Chr.
 J. David Hamley Richard Glenn E. A. Fanshier
 Dr. J. F. Bittner Robert Sussman Eva Wahl
 Steven H. Corey, Sec.

1980 Dr. John McBee, Chr.
 J. David Hamley Richard Glenn Eva Wahl
 Dr. J. F. Bittner Robert Sussman Pat Harcourt
 Steven H. Corey, Sec.

1981 Dr. John McBee, Chr.
 J. David Hamley Richard Glenn Eva Wahl
 Dr. J. F. Bittner Ken Jackson Pat Harcourt
 Steven H. Corey, Sec.

1982 Richard Glenn, Chr.
 J. David Hamley Dr. John McBee Eva Wahl
 Dr. J. F. Bittner Ken Jackson Pat Harcourt
 Steven H. Corey, Sec.

1983 Pat Harcourt, Chr.
 J. David Hamley Richard Glenn Eva Wahl
 Dr. J. F. Bittner Ken Jackson Dr. John McBee
 Steven H. Corey, Sec.

1984 Pat Harcourt, Chr.
 J. David Hamley Richard Glenn Eva Wahl
 Dr. J. F. Bittner Ken Jackson Dr. John McBee
 Steven H. Corey, Sec.

1982	3,445.00	Pendleton Senior High School Purchase final section of bleachers for high school gymnasium (project completed)
	1,048.00	Washington School P.T.A. Purchase and install 2 tetherball poles with balls and 2 see-saws for playground
	2,578.59	Pendleton Parks and Recreation Purchase playground equipment (spring animals and climbers) for West Community Park, Sherwood Park and Til Taylor Park
	2,500.00	Umatilla County Library, Pendleton Repair floor and install new floor covering in Children's Room in the library
	1,500.00	Pendleton Arts Council Purchase 10 new display boards and repair 40 art boards.
	1,395.00	Pendleton Junior Livestock Show Purchase and install a permanent livestock scale inside the Round-Up Pavillion on west side for 4-H and FFA projects.
	300.00	Boy Scout Troup #743 Purchase new tents and camping equipment
	812.00	Knights of Pythias Little League Baseball Toward completion of dug-outs and update irrigation system and electrical improvements
	1,647.00	Pendleton Babe Ruth Association Purchase three 16' by 5 row portable steel grandstand units for Babe Ruth baseball park.
	1,100.00	St. Anthony Hospital Purchase recording Resusci-Anne for use in cardio-pulmonary resuscitation classes.
1983	1,500.00	Sherwood School Kindergarten Parents' Club Purchase playground equipment
	1,175.00	Washington School Parents' Club Purchase Merry-go-round for playground
	860.00	McKay Creek Primary Teachers Purchase GEO Dome Climber for playground
		Pendleton Parks & Recreation Dept. & Cemetery
	3,281.95	Purchase spring animals, climbers, basketball standards and merry-go-rounds for various parks
	500.00	Purchase picnic tables for parks
	850.00	Purchase flowering & evergreen trees for Olney Cemetery
	3,209.00	Pendleton Public Schools Repair stained glass window in Vert Auditorium and cover with a plexiglas shield
	600.00	Pendleton Community Schools Purchase office furniture
		Pendleton Branch Library
	1,500.00	Purchase of adult and children's books
	920.00	Purchase of two films addressing teenage pregnancy for Boys & Girls Aid Society, Pendleton volunteers

	3,500.00	Pendleton City Police and Municipal Court Purchase of video communications system between courtroom and jail
	4,000.00	V.F.W. Post #922 Provide materials for new roof to cover picnic tables at Stillman Park
	4,000.00	Pendleton School District 16-R Purchase recording and non-recording resuscitators for CPR training programs
	675.00	Pendleton Community Hospital Purchase film "The Beginning of Life" for prenatal education program
	590.00	St. Anthony Hospital Purchase air-dyne bicycle for cardio-pulmonary rehabilitation program
	2,255.00	Pendleton Firemans Fund Purchase pediatric training manikin and a hearst rescue tool cutting jaws.
		Pendleton High School
	1,350.00	Purchase digital display time clock for PHS & BMCC Track/Cross Country Teams and Pendleton Swim Team
	825.00	Construction of trackside storage building at BMCC track for BMCC and PHS Track and Field Teams
	900.00	Blue Mountain Community College Purchase and install two add'l access gates to community tennis courts at BMCC
	1,098.00	Pendleton Babe Ruth Association Purchase two sections of steel moveable bleachers
	1,100.00	Pendleton Junior Soccer Association Purchase soccer goals and nets for installation at Pendleton Junior High School soccer field
	5,000.00	American Association of University Women, Pendleton Branch Toward construction of handicapped access ramp to Vert Auditorium/Helen McCune Building complex
	2,500.00	The Salvation Army, Pendleton Branch Toward construction of new community center
	500.00	Round-Up Hall of Fame Assist in funding lay-out, art work and printing of two-color brochure to promote the City of Pendleton and the Hall of Fame
	1,500.00	Lincoln School Parents Toward construction of "Lincoln Log" playground complex
	1,000.00	Pendleton Junior High Parent's Club Toward purchase of Baldwin Hamilton piano for stage at new Junior High School
	1,250.00	Pendleton Branch Library Purchase of dual 8mm movie projector and a 16mm movie projector

1984

3,300.00 **Pendleton Senior Center**
Purchase of automatic dishwasher

2,500.00 **The Salvation Army, Pendleton Branch**
Matching pledge toward construction of new community center

3,500.00 **American Association of University Women, Pendleton**
Add'l grant toward construction of handicapped access ramp to Vert Auditorium/Helen McCune Building

800.00 **Pendleton Parks, Recreation & Cemetery Depts.**
Purchase spring animals for Roy Raley Park, park tree plantings and purchase approx. 20 trees for cemetery

2,000.00 **Washington School PTA**
Purchase of "Growing Big Toys" playground complex

1,525.00 **Hawthorne School, People Involved in Education**
Purchase backstop and backboard for playground

2,000.00 **Knights of Pythias, Little League Program**
Purchase riding lawn mower and storage shed

325.00 **Pendleton Community Hospital**
Purchase film "Duffy the Dragon" for pediatric patients and elementary school presentations

Pendleton Branch Library

1,500.00 Purchase of adult records and children's records

1,000.00 Purchase of high interest, low vocabulary books for adults and low vocabulary students

1,444.50 Purchase 3 films and 28 books relating to adoptions, sexual activity by young people and teenage parents, for Boys & Girls Aid Society, Pendleton volunteers

500.00 **Operation Blessing, Inc.**
Purchase of a range for free meals program

2,500.00 **Pendleton Foster Grandparents, Senior Companions Project**
Toward purchase of 12 passenger van for use by Pendleton volunteers

2,500.00 **Blue Mountain Economic Development Council, Inc.**
Toward purchase of a van for food-nutrition project

950.00 **Nova Enterprises**
Purchase a new motor for gang-rip for use in work experience programs

517.00 **Umatilla County Health Department**
Purchase of child car seats for new program called "Pendleton Car Seat Loan Program"

704.00 **Pendleton School District 16-R**
Purchase folding tables for Hawthorne School Multi-purpose room

2,000.00 **Pendleton Junior High School**
Purchase portable outside bleachers for football and spring sports at new Junior High School

3,000.00 **Blue Mountain Community College**
For materials only to construct dug outs and storage sheds at American Legion Baseball facility

1,738.00 **Blue Mountain Economical Development Council**
Purchase one pallet jack
Purchase playground equipment for Headstart Program to be housed in John Murray School and accessible for children living on the South Hill

500.00 **Pendleton Community Hospital**
Purchase of video cassette player

Pendleton Firemans Fund

325.00 Purchase of fire safety film for elementary school children

200.00 Purchase of Kendrick extraction devise

900.00 **Pendleton Jr. Livestock Show**
Purchase materials only for constructions of livestock wash rack for location at Pendleton Round-Up grounds