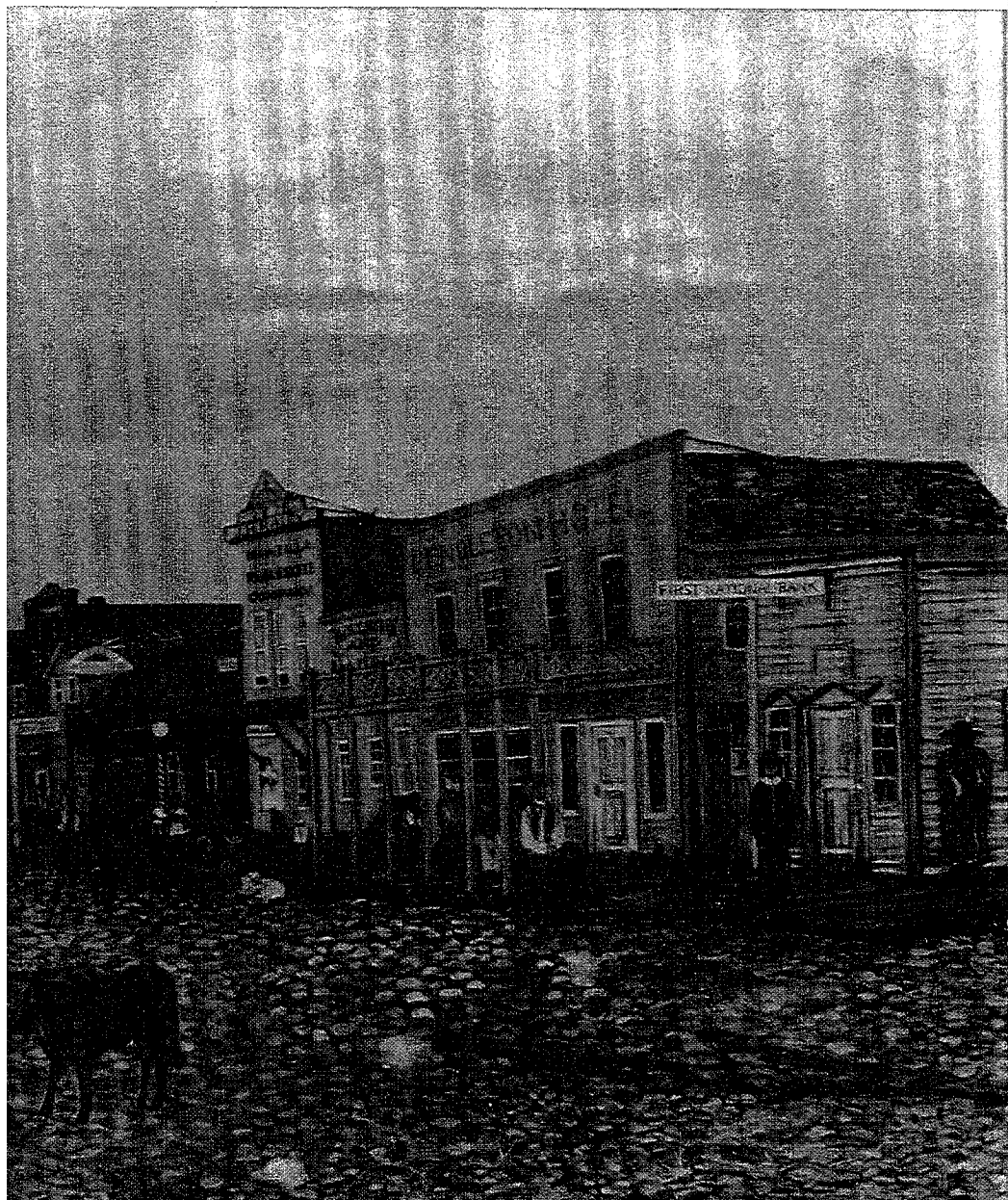


# History of the Pendleton Foundation Trust 1928-1986



An original oil painting of early Pendleton in 1868 together with a cowboy photo of downtown Main Street in 1878 and an update on buildings and wood sidewalks in about 1888 inspired the composite tempera painting by Beverly Simpson Raley, wife of James H. Raley, the son of James Roy Raley, one of the founders of the Pendleton Foundation Trust. James Roy Raley was the son of Col. James Henry Raley, Mayor of Pendleton in 1891, who, together with brother, Benjamin Raley, and aunt and uncle, Moses Goodwin and Mrs. Ora Goodwin Raley, were of the first settlers of Pendleton, opening the first Pendleton hotel, named Goodwin's Station, about 1864.



**HISTORY  
OF  
THE  
PENDLETON  
FOUNDATION TRUST**

**1928-1986**

The present trust committee dedicates this history to those other citizens of Pendleton who have given of their time and energy to serve on the Pendleton Foundation Committee; to those many citizens and organizations who have seen needs, and with the financial assistance from the Pendleton Foundation, have been able to complete projects which have bettered the Pendleton community; and to those many persons, both from Pendleton and from the surrounding area, who have over the years made financial contributions, both large and small, to the Pendleton Foundation. It is through the efforts of all of these people that we, as citizens of Pendleton, are able to enjoy a richer life and to share in the many noteworthy additions to our city from the Pendleton Foundation.

The initial history of the Pendleton Foundation was published in February, 1981. Perhaps in part because of the circulation of that history throughout the Pendleton area, the trust assets have nearly doubled since 1981. At the present time, the Pendleton Foundation controls over \$875,000 through its trustee banks, and is able to put back into the Pendleton community annual gifts of approximately \$45,000. It is because of the work of the individuals and organizations to which this history is dedicated that the Pendleton Foundation has been able to assume so strong a role in Pendleton's future. With similar support, the Pendleton Foundation should continue to influence favorably the living conditions, educational experiences, and civic needs of the Pendleton people for years to come.

Steven H. Corey  
Secretary  
December, 1986

## **History of THE PENDLETON FOUNDATION TRUST 1928-1986**

In 1986 Pendletonians can look with satisfaction at the record of an institution that has served the community for 58 years; an institution that, upon its establishment in 1928, was unique in the State of Oregon. This institution is the Pendleton Foundation, a community trust fund that has generously contributed to the city's civic, educational and charitable needs. From its very beginning the Foundation has been praised both within the city and throughout the state as an example of Pendleton's community spirit at its very best, and this praise continues even today.

One can go almost anywhere in Pendleton, and it is possible to see the results of the Pendleton Foundation gifts. A merry-go-round at Aldrich Park, a drinking fountain at McKay Creek School, bleachers at the Little League Park, Pendleton High School gym and Armory, the lighting system and also the two handicap ramps at the Vert Auditorium are all visible evidence of the many noteworthy projects which have either been partially or entirely funded by the trust fund. Indeed there would be many things that Pendleton would not have if it were not for the Foundation's gifts each year (as evidenced by the list of the gifts in back of this book).

Today the Pendleton Foundation controls over \$875,000 through its trustee banks, and is now able to give in excess of \$45,000 in monetary gifts annually to the community. It is clear that the Foundation will continue to play a significant role in Pendleton's growth and improvement for a very long time to come.

The Pendleton Foundation was officially started on May 10, 1928 with a Resolution and Declaration of Trust. The conception of such an institution had been alive much longer, however, in the minds of those on the Civic Committee of the Pendleton Commercial Association, the forerunner of the present day Chamber of Commerce. Led by the Association manager and committee secretary, George Baer, the committee had methodically researched the operations of other trust funds across the nation to find the type that would most effectively suit Pendleton's needs. They sought to provide means for citizens to contribute to the community by giving a gift in memory of someone who had passed away or as a simple donation. Memorial funds could also be established through wills or by those who were still living and wanted to see the results of their contributions. The donations would have the additional advantage of being tax exempt, or in the case of willed bequests, estate and inheritance taxes would be reduced.

The creation of the trust was an outgrowth of Colonel James H. Raley's interest in a trust that had been created by the citizens of the City of Cleveland, Ohio. Colonel Raley, James E. Akey, N. D. Swearingen, James S. Johns, R. M. Crommelin, James Fee and Mrs. E. W. McComas were appointed to serve on the first committee. Mrs. McComas was unable to serve because of an illness, so Guy Matlock was chosen to replace her.

The language of the Pendleton Foundation Trust, in a large measure, followed the revisions of the one earlier created in Cleveland. The purpose of this new trust was best expressed in the Foundation's Resolution and Declaration:

"To assist civic and educational undertakings whether now supported by private gifts or public taxation.

-To promote education and scientific research,

-To improve living conditions or to provide recreation or recreational grounds for all classes.

-For such other civic or public purpose as will best make for the mental, moral and physical improvement of the inhabitants of the City of Pendleton, according to the discretion of the majority in number of the committee to be constituted as hereinafter provided and to be called and known as the Pendleton Foundation Committee."

The organization of the Foundation was based on the model of several trust funds located in eastern cities that had accumulated millions of dollars. The donations would be held by the local banks that had been designated as trustees for the fund. The two banks chosen to act in this capacity were the First National Bank, now the First Interstate Bank, and the "old" Inland Empire Bank, which in time would be replaced by the United States National Bank of Oregon.

As in the beginning, the Pendleton Foundation Committee is made up of seven citizens, selected for their knowledge of civic, educational and charitable needs of the City of Pendleton. One member is appointed by the mayor, one is appointed by the school board, and one is appointed by the Chamber of Commerce. The other four are appointed by the Board of Trustees, which is composed of representatives from both of the trustee banks, and the presiding Judge of the Circuit Court of the State of Oregon. The Board of Trustees also appoints a secretary to aid the Committee.

To prevent any conflicts of interest, no person holding public office shall be allowed to serve on the committee, nor shall more than two members of the same religious denomination serve.

It is the responsibility of the Foundation Committee to decide each year who the recipients will be for the Foundation gifts. The monies so distributed are created by the earned interest on the principal held in trust by the Foundation Committee. At no time can any of the principal be used for any of the gifts. For the past few years, allocations to the various recipients have been given on a bi-annual basis.

In order to maintain its tax exempt status as a charitable, non-profit organization, the Foundation passed a resolution in October, 1973. From that time forward income from the fund was re-routed through the Treasurer of the City of Pendleton. The foundation Committee would still decide what to do with the income, but the decision was subject to the approval of a "new" Management Committee of the Pendleton Civic, Education and Recreation Trust Fund. This Committee is composed of the chairperson of the Foundation Committee, the President of the Chamber of Commerce, and the President of the City Council. Income from special funds were not subject to this procedure, so in practice little was changed except that the income distributed by the Foundation was now written on checks from the City Treasurer's Office.

The Commercial Association chose what was probably the most flexible plan available. Instead of having all contributions earmarked for a particular purpose, the money could be channeled to the most deserving causes each year. Changing economic and social conditions or the disappearance of organizations would not make the trust fund obsolete; the money could simply be used elsewhere. Trust funds with specific purposes stipulated could still be established, but the Foundation Committee reserved the right to divert the income for another purpose if circumstances changed so that compliance with the terms of the donation were made impossible.

Special funds, as they are known, differ from the general fund in that those who established the fund specified how its income was to be spent. The Willetta W. Donert Memorial Fund is an example of this kind of fund. Income from this fund is given to the Umatilla County Library for the purchase of books. In 1955 the Kilkenny Fund was started by former Foundation Committee member and Chairman, John F. Kilkenny. This income was to be used by the Umatilla County Library to acquire manuscripts, books and records on the Oregon Territory as well as literature and history of Scotch and Irish origin. The Blue Mountain Community College Library was later named the recipient of this income. In the 1960s the Jack Mulligan Memorial Fund was established, granting money to the County Library for books on American History, business, industry and biography. The Woodmen of the World Pendleton Camp #41, also created a fund for the library to purchase books.

Not all of these special funds were formed to aid the local library. The Roy Raley Memorial Fund contributes money to the City of Pendleton for significant and lasting improvements in Roy Raley Park, and as its name suggests, the Parks and Playgrounds Fund provides money for the betterment of city recreational facilities.

Bequests have been the major source of money for the Foundation. Undoubtedly one of the most significant early day bequests was from the estate of Mrs. Minnie Stillman, a long time Pendleton resident and community leader. The value of this estate was over \$42,000; an amount that greatly expanded the Foundation's annual income. The income from this donation was used to help purchase such things as the bandstand at Pioneer Park, the base of the Til Taylor statue, a film projector for the senior high school, and an oxygen tent for civic use. Mrs. Stillman also donated her property on Byers Avenue with the request that it be made into a city park. A portion of her estate was used to purchase additional property for this project. The park finally began to take form in 1945, with the Foundation contributing \$2,294 in 1946 and 1947 for its development.

Through the years the Foundation has continued to provide money for improvements in Stillman Park, including \$742 for stove covers in 1962 and 1968, and \$5,500 for tennis court lighting in 1978. Many projects have been a cooperative effort, such as the \$4,000 contributed by the Foundation, and the Veterans of Foreign Wars contributing the labor to construct the roof extension on the stove shelters. This addition has made the facilities more useable, especially during inclement weather.

The Foundation also purchased a marker for the park that reads as follows:

DEDICATED IN HONOR OF  
MINNIE E. STILLMAN  
ESTEEMED PENDLETON PIONEER  
WHO WILLED HER ESTATE TO  
THE PEOPLE OF PENDLETON  
THROUGH THE PENDLETON FOUNDATION

1961

During the 1940s the bulk of the Foundation's income went to the Pendleton Parks Commission. Of the approximately \$13,700 distributed in that decade, nearly \$10,000 went to the city for improvements in Pendleton parks. This trend continued in the 1950s with \$9,188 of the \$15,400 distributed going to the Parks Commission. During the 1960s, however, the percentage of the Foundation income spent on city parks declined significantly; city parks received only \$4,300 of the \$20,000

distributed. This change can probably be explained easily enough — for several decades of contributions enabled the city to purchase such things as drinking fountains, playground equipment and wading pools, thus reducing the need for these items in later years.

The Foundation has enjoyed the loyal support of the various news medias, not only in Pendleton but throughout the state as well. This is evidenced by the editorials and newspaper and radio stories which have appeared from time to time.

An editorial in the Portland Oregon JOURNAL of July 23, 1928 noted that Pendleton had established the first permanent trust fund of its type in the state, adding that "Pendleton had done what Portland has long been urged to do." "In back of the Foundation," the editorial continued, "is the spirit of Pendleton; back of it is the nationwide search for the best program, made by George C. Baer, manager of the Pendleton Commercial Association; back of it is the purpose that the citizens of no other city than Pendleton shall have more lasting safeguards of their philanthropies, or living conditions and opportunities of higher standard." The paper encouraged Portland and other communities to follow Pendleton's example.

The Pendleton EAST OREGONIAN and its editor, E. B. Aldrich, were enthusiastic supporters from the very start. Not only did Mr. Aldrich keep readers well informed of the Foundation's development, but he also contributed \$1,000 in 1951. In an editorial entitled "It Will Be a Test" the paper stated that the Foundation would provide a good way for citizens to remember the city by donating money through their wills.

In 1953, after twenty-five years of existence, the Foundation had accumulated over \$47,000. There had been several generous contributions over the years, but there was a feeling that more could be given by those able to do so. The problem was exemplified in 1956 when not a cent was donated. The EAST OREGONIAN took note of this fact in an editorial on December 31st of that year. "If all the people in other cities, who have looked upon the Pendleton Foundation as a model agency, were told that not a single contribution was made to the organization in 1956, they'd undoubtedly be shocked. We are, and it has set us to thinking that perhaps the general assumption that almost everybody in Pendleton knows about the Pendleton Foundation is false. Perhaps all who must share some responsibility for telling the Pendleton Foundation story are as guilty, as those who had the means to give to the organization, but did not."

In 1984 and 1985, editorials appeared in the EAST OREGONIAN and in Medford, THE MAIL TRIBUNE, commending the Foundation as a fine example of a community organization benefiting its residents. The MAIL TRIBUNE stated "It is no world-shaking thing. But when Nova Enterprises, which serves some 35 mentally retarded adults in work and home-care programs needed a new motor and another blade for a table saw at its activity center, the Pendleton Foundation gave it \$950 to buy the equipment. This enabled Nova to fill an \$8,200 order from the Federal Highway Administration for 40,000 wooden stakes and to take on a \$2,000 job for the Forest Service."

By the 1960s the contribution problem had diminished. Both of the trustee banks received hundreds of dollars in gifts for the Foundation. Some of the more substantial donations, besides those already listed included C.P. Strain's two gifts of \$500 in 1948 and 1949, Effie Jean Frazier's contributions of an estate worth \$2,882 in 1951, Florence McCook's gift of \$3,000 in 1968, and Mary C. Allen's bequest of \$1,000 in 1971. Another large contribution was made in 1967, when the Pendleton Masonic Lodge released \$3,818 from the estate of Sarah Thompson to the Foundation.

In 1974 the Pendleton Foundation received what was far and away its largest donation, the Claude and Bertha Hanscom estate. It was worth, at that time, over \$255,000 most of which originated from the sale of the Hanscom's farm land near Helix. The estate had been willed by Claude Hanscom to his wife, Bertha, who held it until she died. It was then left to his nephew, Roy Furnish, coming to the Foundation only after he passed away.

Not long after the Foundation received this bequest it was given two other generous donations, bequests of the Eva Fletcher estate of nearly \$30,000 in 1976, and the Florence E. Thompson estate of \$21,199 in 1978. Other monies received by the foundation were \$500 from the Elizabeth Murphy estate in 1977; a fraternal contribution of \$500 from the Woodmen of the World in 1978; and a memorial to long-time art teacher, Paula Pope, of \$600 from the teachers at the Helen McCune Junior High School in 1979.

As more and more people became aware of the outstanding contribution the Foundation was making to Pendleton, more and more memorials and bequests were being received by the Foundation.

As a thank you gift for the Foundation's assistance in building the handicap ramp at the Vert, Miss Alma Rohrman, a long time resident of Pendleton, contributed \$500 in 1980. In December of 1982 when Cecil

Fischer retired as Postmaster from the local Pendleton Post Office, and at his request, co-workers gave over \$400 as a retirement gift. Helen Johns gave \$1,000 in 1982, and her sister, Mary Johns left the Foundation U.S. Bancorp stock valued at approximately \$74,000 in 1985. Alfred Cunha, a long time member and Chairman of the Foundation left an insurance policy of \$3,709 in 1984.

About 1960, Marcus and Minnie May, upon retirement, moved from the Pendleton area to California. It is evident from their wills written in 1978 that they still had a strong affection for Pendleton, for in the latter part of 1986, the Foundation was the recipient of approximately \$220,000 from their estates.

The Foundation's early records were lost when the Stangier Brothers Building burned in 1960, but through the generosity of Mrs. Beverly Raley-Gantz, the files are once again almost complete, as she presented the personal Pendleton Foundation file of Roy Raley, her former father-in-law, who had been closely associated with the Foundation for many years.

As the Foundation reflects back on over five decades of service to Pendleton, it can be proud of its list of accomplishments for it has contributed over \$330,000 for civic, educational and charitable needs and improvements. At the same time, the Foundation kept its own administrative expenses under 5 percent. This book on the history of the Foundation and the list of gifts is therefore dedicated to those far sighted and civic-minded citizens, who had a vision of creating such a worthwhile Foundation, and saw it through to its inception 58 years ago.



## Grants 1939-1986

<b>1939</b>	1578.06 <b>Pendleton Parks Commission</b> 722.50 <b>School District No. 16R</b> 534.96 <b>Pendleton Parks Commission</b>
<b>1940</b>	2000.00 <b>Pendleton Parks Commission</b>
<b>1941</b>	2000.00 <b>Pendleton Parks Commission</b>
<b>1942</b>	1674.20 <b>Pendleton Parks Commission</b>
<b>1943</b>	
<b>1944</b>	1525.49 <b>Pendleton Parks Commission</b>
<b>1945</b>	1407.36 <b>Pendleton Parks Commission</b>
<b>1946</b>	330.00 <b>Umatilla County Health Unit</b> Purchase of oxygen tent for use of citizens of Pendleton with no charge. 2000.00 <b>Pendleton Parks Commission</b> For development of Minnie E. Stillman Park.
<b>1947</b>	294.78 <b>(undisbursed balance from 1945)</b> <b>Pendleton Parks Commission</b> For development of Stillman Park. 1000.00 <b>City of Pendleton</b> Completion of lounge and music room adjoining library.
<b>1948</b>	<b>City of Pendleton</b> For bandstand and bathrooms at Pioneer Park.
<b>1949</b>	1000.00 <b>(including 677.22 from year 1947)</b> <b>City of Pendleton</b> Furnishing and complete lounge and music room adjoining library. 500.00 <b>School District No. 16R</b> (Return funds from suggested improvement of ventilation of Vert. Unable to add adequate funds.) 16 mm Sound Projector for Senior High School.
<b>1950</b>	573.88 <b>Umatilla County Library</b> For microfilming historical data.
<b>1951</b>	2000.00 <b>Pendleton Parks Commission</b>
<b>1952</b>	850.00 <b>City of Pendleton</b> Towards cost of wading pool for Sergeant City park. 350.00 <b>City of Pendleton</b> Towards cost of wading pool for E.B. Aldrich park, or for purchase of additional playground equipment for same park.
<b>1953</b>	597.45 <b>City of Pendleton</b> Playground equipment for Sherwood Heights park.

500.00 **City of Pendleton**  
Towards wading pool in E.B. Aldrich park.

1954 850.00 **City of Pendleton**  
Contribution for wading pool in Sherwood Heights park.

511.11 **City of Pendleton**  
(includes 202.91 from 1952)  
Towards purchase of playground equipment for Pend-Air Heights park.

1955 **City of Pendleton**  
300.00 Merry-Go-Round for E.B. Aldrich park.  
300.00 Merry-Go-Round for Pend-Air park.  
150.00 Drinking fountain for E.B. Aldrich park.  
375.35 For purchase of two Jungle Gyms.  
100.00 **Umatilla County Library**  
For one film of story and life of Marian Anderson.

1956 **City of Pendleton**  
450.00 Purchase of Jungle Gyms.  
200.00 Fireplace in Pioneer park.  
150.00 Drinking Fountain in Pioneer Park.  
431.17 Additional purchase of drinking fountains.

1957 **City of Pendleton**  
150.00 Drinking fountain for Pioneer Park.  
150.00 Teeter-totter for Roy Raley park.  
210.63 Apply on cost of drinking fountain for Roy Raley park.  
878.75 **School District No. 16R**  
For 5 slides and one combination of see-saw and slide.

1958 **City of Pendleton**  
630.00 For 3 drinking fountains, Pioneer, Til Taylor and Roy Raley parks.  
400.00 Addition for drinking fountain at Roy Raley park.  
629.80 Playground equipment, Montee park.  
689.96 Three downtown area drinking fountains.  
365.00 **Umatilla County Library**  
For book return to be installed at library entrance.

1959 2163.00 **School District No. 16R**  
For purchase of grand piano.  
377.82 **City of Pendleton**  
Marker for Minnie E. Stillman park and playground equipment.

1960 951.00 **Pendleton School District No. 16R**  
For purchase of coat racks for high school cafeteria.  
255.00 **Umatilla County Library**  
For purchase of two lounge chairs and a table.  
277.48 **City of Pendleton**  
Additional for purchase of marker for Minnie E. Stillman park.  
971.00 Wading pool fencing for Til Taylor park.

1961 1250.80 **City of Pendleton**  
Lighting equipment for public tennis courts.

250.00 **Umatilla County Library**  
For purchase of phonograph records.

39.42 **City of Pendleton**  
Aid in purchase of marker for Minnie E. Stillman park.

1962 100.00 **Umatilla County Library**  
Toward purchase of record player.  
241.85 **City of Pendleton**  
Covers for stoves in Minnie E. Stillman park.

1500.00 **City of Pendleton**  
For lighting facilities for tennis courts at high school.

1963 360.59 **City of Pendleton**  
Completion of tennis court lighting at the new high school.  
400.00 Purchase of 12 sidewalk disposal cans.  
500.00 **Umatilla County Library**  
carpeting for music room.  
112.24 **Umatilla County Library**

1964 380.00 **City of Pendleton**  
Eight unit swing set for McKay Creek school.  
345.00 Merry-Go-Round for same school playground.  
228.00 **Umatilla County Library**  
For purchase of water fountain for use in library.  
175.00 **City and School District No. 16R**  
Horizontal ladder for use in McKay Creek Playground.  
773.54 **Blue Mt. Community College Library**  
For library public reference books.

1965 200.00 **City of Pendleton**  
Water fountain for Sergeant City park.  
700.00 **City and School District No. 16R**  
For backstop for McKay Creek playground.  
800.00 **Pendleton Babe Ruth Association**  
For aid in construction of restroom facilities in new Babe Ruth ball park.  
371.16 **Blue Mt. Community College**  
Books for Blue Mountain Community library.

1966 500.00 **City of Pendleton**  
Baseball backstop for Round-Up stadium and 3 portable backstops for McKay Creek park.  
150.00 **School District No. 16R**  
For purchase of outside drinking fountain for McKay Creek park.  
300.00 **Umatilla County Library**  
For unrestricted purchase of books.  
300.00 **Blue Mt. Community College**  
For purchase of books for B.M.C.C. library.  
886.39 **Pendleton Babe Ruth Assoc.**  
For purchase of seating facilities.

1967 450.00 **Pendleton Little League**  
For park-wide underground sprinkling system.

1968

404.00 **City and School District No. 16R**  
Softball backstop for McKay Creek area, and climbing device called "catty caterpillar".

1000.00 **Committee of multi-purpose and public address system.**

500.00 **V.F.W.**  
Covers over stoves at Stillman park.

600.00 **Pendleton Little League**  
Backstop and fencing.

890.00 **City of Pendleton**  
Multipurpose shelter for Sherwood Heights park.

420.41 **Pendleton Babe Ruth Assoc.**  
Retaining wall along north bank of playing field.

1969

500.00 **Pendleton Babe Ruth Assoc.**  
Purchase and installation of fencing around park.

100.00 Later addition.

500.00 **Pendleton Little League**  
Purchase and installation of dugouts and bleachers.

100.00 Later addition.

720.00 **City of Pendleton Rec. Dept.**  
Purchase of Frontier Outpost to be erected in one of city parks.

100.00 Later addition.

498.39 **School District No. 16R**  
Replacement of drapes in Vert Auditorium.

100.00 Later addition.

100.00 **Vert Committee**  
Fans for clubroom.  
(Original grant was for \$500.00 to be used to apply on air conditioning equipment for clubroom. Since the committee was unable to find funds \$400.00 was returned, and was dispensed in the four \$100.00 additions above.)

1970

671.89 **Pendleton Rangers Drum and Bugle Corps**  
Solely for purchase of instruments.

500.00 **Pendleton Little League**  
Improvement of ballpark sprinklers system.

500.00 **City of Pendleton Parks and Recreation**  
For purchase of playground equipment.

500.00 **Pendleton Babe Ruth Assoc.**  
For construction of dressing rooms.

350.00 **Blue Mt. Community College**  
Showcase for new museum.

6.86 **City of Pendleton Parks and Recreation**

1971

150.00 **Blue Mt. Community College**  
Purchase of show cases for museum.

500.00 **Pendleton Little League**  
To be applied on cost of construction of permanent bleachers at Little League park.

100.00 **Helen McCune Junior High**  
Construction of new bleachers for gymnasium.

500.00 Added to above fund by motion, sum returned by Vert Committee (not used).

300.00 **City of Pendleton Parks and Recreation**  
For 6 new benches in Roy Raley park.

500.00 **Pendleton Babe Ruth Assoc.**  
Construction of block building for showers and storage at Babe Ruth field.

447.97 **School District No. 16R**  
To be applied toward purchase of new uniforms for high school band.

300.00 **Pendleton Rangers Drum and Bugle Corps**  
Purchase of two soprano bugles.

1972

600.00 **City of Pendleton Parks and Recreation**  
Two electric stoves and basketball backboard for Roy Raley park.

290.00 **Pendleton Rangers Drum and Bugle Corps**  
Purchase of a brass baritone.

300.00 **Vert Memorial Council**  
Refurbishment of grand piano in clubroom.

940.72 **City of Pendleton Parks and Recreation**  
To assist in resurfacing and painting of tennis courts.

320.00 **Umatilla County Library**  
Purchase of drinking fountain on lower floor of library.

940.71 **Pendleton Babe Ruth Assoc.**  
Assist in cost of additional bleachers at Robert L. White baseball park.

1973 **Requests read but no gifts made because of problem in qualifying.**

1974

500.00 **Pendleton Round-Up Hall of Fame**  
To aid in expense of construction of their new building.

529.50 **Vert Committee**  
Electrical installation costs for new light fixtures.

325.00 **Rangers of E.O.**  
For purchase of a bass baritone horn.

550.00 **Helen McCune Junior High**  
For purchase of bleacher in gymnasium.

396.45 **Pendleton Community Schools**  
Purchase of basketball-standards, card tables and office equipment.

60.00 **Blue Mt. Council, Boy Scouts**  
Course fee to permit scoutmaster to attend Woodbadge Training.

650.00 **Pendleton Little League**  
Assist in continuation of construction of concrete block building at Little League park.

650.00 **Pendleton Swim Association**  
Provide season swimming tickets for under-privileged children, and other purposes.

1975

- 500.00 **City of Pendleton Parks and Recreation**  
Assist in resurfacing Stillman Park tennis courts.
- 200.00 **Umatilla County Library**  
For purchase of "large type" books.
- 210.00 **Blue Mt. Community College**  
To assist in museum activities.
- 200.00 **Arts Council of Pendleton**  
To be used to help in expenses of annual Arts Festival.
- 300.00 **Blue Mt. Community College**  
To assist in museum activities.
- 700.00 **City of Pendleton Parks and Recreation**  
Purchase of playground equipment.
- 250.00 **Pendleton Child Care Center**  
Purchase of educational material to enrich its program.
- 600.00 **Rangers of E.O.**  
Used only toward purchase of 1½ ton truck with van body (to be returned if not used within one year).
- 635.23 **Umatilla County Library**  
For use in initiating "Reading is Fundamental" within Pendleton community only.
- 300.00 **Pendleton Swim Association**  
To provide season tickets for under-privileged children and other purposes.
- 250.00 **Civil Air Patrol**  
For use in first aid programs of a permanent nature.
- 74.18 **Umatilla County Library**

1976

- 7500.00 **School District 16R**  
New lighting system for Vert auditorium.
- 4000.00 **Pendleton Optimist Club**  
Toward purchase of wrestling mat.
- 2675.29 **Pendleton High School Choir**  
Toward purchase of new choir robes.
- 1000.00 **St. Anthony's Hospital**  
Audio-visual patient-teaching equipment.
- 1000.00 **Pendleton Community Hospital**  
Same.
- 10,000.00 **Blue Mt. Community College**  
Provide lighting for new tennis courts on college campus.
- 250.00 **Pendleton Child Care Center**  
For educational and instructive materials.
- 338.90 **Pendleton Optimist Club**  
Youth football program.
- 500.00 **Umatilla County Historical Society**  
Publication of history of Pendleton.
- 200.00 **Civil Air Patrol**
- 150.00 **"Picture Ladies"**  
Organization promoting art in public schools.

- 275.75 **Pendleton Community Schools**  
For archery equipment.
- 500.00 **Pendleton Babe Ruth Association**
- 1400.00 **Washington School**  
Playground equipment.
- 1019.00 **Umatilla County Library**  
Aid "Reading is Fundamental" program.
- 1950.00 **Pendleton Parks and Recreation**  
Playground equipment and portable bleachers.
- 500.00 **Blue Mt. Community College museum**
- 600.00 **Agency On Aging**  
For equipment for "Meals On Wheels" program.
- 189.21 **Umatilla County Library**  
Purchase of specialty books.

1977

- 5000.00 **School District No. 16R**  
Completion of new lighting for Vert auditorium.
- 250.00 **Umatilla County Historical Society**  
Preserving Pendleton history.
- 150.00 **Pendleton Fire Dept. Hose Co. No. 1**  
Purchase of 2500 stickers for use on homes where children and invalids are living.
- 1000.00 **Blue Mt. Community College**  
Manual lift for lowering handicapped into swimming pool.
- 250.00 **Pendleton Babe Ruth Association**  
Part of cost of all-weather batting station.
- 500.00 **Pendleton Jaycees**  
To aid in improving sound at armory.
- 775.00 **McKay Creek School**  
Playground equipment.
- 1848.00 **Pendleton High School**  
Aid in purchase of moveable bleacher for high school gym.
- 600.00 **Blue Mt. Community College**  
Museum.
- 250.00 **Pendleton Little League**  
Capital improvements.
- 1200.00 **School District No. 16R**  
Aid in purchase of adequate sound system for high school auditorium.
- 2000.00 **Bicentennial Parks Committee**  
To provide sprinkle system, shrubs, trees and lawn for Armory parking lot.
- 200.00 **Pendleton Arts Council**  
Promoting arts.
- 195.00 **St. Anthony Hospital**  
Video tape cassette, "What is Diabetes?" Use to be extended to Community Hospital.

- 297.60 **Pendleton Community Schools**  
Cooking appliances.
- 1000.00 **Retired Senior Volunteer**  
Toward purchase of used automobile for transporting elderly.
- 400.00 **Pendleton Child Care Center**  
Aid in purchasing institutional dishwasher.
- 500.00 **Pendleton Round-Up Hall of Fame**  
Permanent improvements.
- 875.00 **Umatilla County Library**  
Books and film projector.
- 2000.00 **Pendleton Community Concerts Assoc.**
- 1100.00 **Pendleton Parks and Recreation**  
Wind screens at swimming pool.
- 1000.00 **Pendleton Swim Assoc.**  
Automatic timing system.
- 500.00 **Pendleton Community Hospital**  
Optics projector, for teaching class and consumer groups.
- 300.00 **Pendleton Firefighters Assoc.**  
Slide projector and photo supplies. Training aids for both fire and ambulance services.
- 1000.00 **Pendleton Hose Company No. 1**  
Toward purchase of "Jaws of Life" rescue tool, to upgrade emergency medical service.
- 2450.00 **Pendleton Parks and Recreation**  
Playing equipment, backstops and soccer goals.
- 5500.00 **Pendleton Parks and Recreation**  
Lighting two tennis courts at Stillman park.
- 400.00 **Hawthorne School**  
Bunker Hill Climber.
- 199.00 **John Murray Junior High**  
Tennis court nets.
- 400.00 **McKay Creek Elementary School**  
Soccer goals and nets.
- 3854.00 **Helen McCune Junior High**  
New drapes, curtains and carpeting for Vert Little Theater.
- 4625.00 **Pendleton Parks and Recreation**  
Electronic timing equipment. Co-operative use by Pendleton schools, Swim Assoc. and Parks and Recreation
- 750.00 **Pendleton Jaycees**  
Aid in new sound system for Pendleton Armory.
- 1456.00 **Pendleton Arts Council**  
Recovering art boards.
- 897.00 **Pendleton Community Schools**  
Figurine to teach cardio-pulmonary resuscitation.
- 1000.00 **St. Anthony Hospital**  
Medical educational video tape.

1978

1979

1980

- 1000.00 **Pendleton Babe Ruth Assoc.**  
To replace scoreboards.
- 350.00 **Blue Mt. Community College museum**
- 1000.00 **School District No. 16R**  
Lighted area for joggers.
- 500.00 **Pendleton Babe Ruth Assoc.**  
Fencing a new field for 13 yr. olds
- 530.95 **Pendleton Community Schools**  
New range for cooking-baking-nutrition programs.
- 500.00 **Sherwood Heights Elementary School Parents Club**  
Safety pads for the playground equipment.
- 500.00 **Elementary School Parents of Pendleton**  
Basketball backboard adapters for use by elementary children in all Pendleton grade schools.
- 5520.00 **Pendleton Senior High School**  
Purchase and installation of two sections of bleachers for the high school gymnasium.
- 755.00 **Pendleton Senior High School Athletic Dept.**  
Film Projector.
- 4498.00 **City of Pendleton**  
Purchase of playground equipment for the new park on McKay Creek.
- 564.00 **Pendleton Community Hospital**  
Hospital equipment.
- 1000.00 **Knights of Pythias**  
New uniforms for the Pop Warner Football program.
- 437.95 **Pendleton Child Care Center**  
Purchase of a Playside, film strip projector and work bench.
- 1000.00 **St. Anthony Hospital**  
Video Tapes for patient education.
- 900.00 **American Red Cross, Umatilla County Chapter**  
Recording Resusci-Annie for use in the Pendleton CPR program.
- 1450.00 **Umatilla County Library**  
For use towards the purchase of a copier.
- 3500.00 **Pendleton Swim Assoc.**  
Purchase of lane ropes.
- 7,500.00 **Pendleton Foundation Trust (for Centennial)**
- 783.77 **Pendleton Foundation Trust (for history)**
- 750.00 **Educational Service District**  
Creating 30 minute slide presentation on Pendleton History.
- 5,000.00 **Pendleton Woman's Club**  
Constructing wheelchair ramp for Vert Clubroom and little theater.
- 500.00 **Umatilla County Historical Society**  
Publishing summer issue of "Pioneer Trails" devoted totally to Pendleton History.

1981

- 1,000.00 **St. Anthony Hospital**  
Purchase additional video tapes for closed circuit television patient education.
- 1,000.00 **Pendleton Community Hospital**  
Toward purchase of arrhythmia recording Resusi-Anne.
- 3,381.75 **City of Pendleton**  
Purchase 12 heavy-duty, attractive receptacles for downtown Pendleton.
- 2,900.00 **Pendleton Senior High School**  
Additional set of bleachers for high school gym.
- 500.00 **Pendleton Swim Association**  
Purchase canvas bags to store lane ropes.
- 800.00 **Pendleton Little League**  
Purchasing girl's softball equipment.
- 5,875.00 **Pendleton School District 16R**  
Refurbish Baldwin Grand Piano located on stage at the Vert Auditorium.
- 4,000.00 **Pendleton Babe Ruth Association**  
Fencing the entire Babe Ruth facility.
- 3,000.00 **Pendleton Senior High School**  
Add additional set of bleachers for high school gymnasium.
- 3,900.00 **Blue Mountain Community College**  
Toward providing spectator shelters for lower tennis courts.
- 1,250.00 **Blue Mtn. Council of Boy Scouts of America**  
To purchase audio-visual equipment for training scout leaders.
- 884.54 **Pendleton Community Schools**  
Purchase a table and chairs.
- 1,000.00 **Knights of Pythias**  
Purchase football uniforms for youth football program.
- 1,000.00 **Rocket Square Dance Club of Pendleton**  
Purchase new turntable and public address system.
- 1,000.00 **St. Anthony Hospital**  
Purchase set of six video tapes on diabetes and film strips for comprehensive patient education program.
- 500.00 **Pendleton Community Hospital**  
Purchase video cassette health education programs.
- Firemans Fund**
- 410.00 Purchase Kendrick extrication device
- 4,788.00 Purchase portable heart monitor
- 3,445.00 **Pendleton Senior High School**  
Purchase final section of bleachers for high school gymnasium (project completed.)
- 1,048.00 **Washington School P.T.A.**  
Purchase and install 2 tetherball poles with balls and 2 see-saws for playground.

1982

- 2,578.59 **Pendleton Parks and Recreation**  
Purchase playground equipment (spring animals and climbers) for West Community Park, Sherwood Park and Til Taylor Park.
- 2,500.00 **Umatilla County Library, Pendleton**  
Repair floor and install new floor covering in Children's Room in the library.
- 1,500.00 **Pendleton Arts Council**  
Purchase 10 new display boards and repair 40 art boards
- 1,395.00 **Pendleton Junior Livestock Show**  
Purchase and install a permanent livestock scale inside the Round-Up Pavillion on west side for 4-H and FFA projects.
- 300.00 **Boy Scout Troup #743**  
Purchase new tents and camping equipment.
- 812.00 **Knights of Pythias Little League Baseball**  
Toward completion of dug-outs and update irrigation system and electrical improvements.
- 1,647.00 **Pendleton Babe Ruth Association**  
Purchase three 16' by 5 row portable steel grandstand units for Babe Ruth baseball park.
- 1,100.00 **St. Anthony Hospital**  
Purchase recording Resusci-Anne for use in cardio-pulmonary resuscitation classes.
- 1,500.00 **Sherwood School Kindergarten Parents' Club**  
Purchase playground equipment.
- 1,175.00 **Washington School Parents' Club**  
Purchase Merry-Go-Round for playground.
- 860.00 **McKay Creek Primary Teachers**  
Purchase GEO Dome Climber for playground.
- Pendleton Parks & Recreation Dept. & Cemetery**
- 3,281.95 Purchase spring animals, climbers, basketball standards and merry-go-rounds for various parks.
- 500.00 Purchase picnic tables for parks.
- 850.00 Purchase flowering & evergreen trees for Olney Cemetery.
- 3,209.00 **Pendleton Public Schools**  
Repair stained glass window in Vert Auditorium and cover with a plexiglas shield.
- 600.00 **Pendleton Community Schools**  
Purchase office furniture.
- Pendleton Branch Library**
- 1,500.00 Purchase of adult and children's books.
- 920.00 Purchase of two films addressing teenage pregnancy for Boys & Girls Aid Society, Pendleton volunteers.
- 3,500.00 **Pendleton City Police and Municipal Court**  
Purchase of video communications system between courtroom and jail.
- 4,000.00 **V.F.W. Post #922**

1983

- Provide materials for new roof to cover picnic tables at Stillman Park.
- 675.00 **Pendleton Community Hospital**  
Purchase film "The Beginning of Life" for prenatal education program.
- 590.00 **St. Anthony Hospital**  
Purchase air-dyne bicycle for cardio-pulmonary rehabilitation program.
- 2,255.00 **Pendleton Firemans Fund**  
Purchase pediatric training manikin and a heart rescue tool cutting jaws.
- Pendleton High School**
- 1,350.00 Purchase digital display time clock for PHS & BMCC Track/Cross Country Teams and Pendleton Swim Team.
- 825.00 Construction of trackside storage building at BMCC track for BMCC and PHS Track and Field Teams.
- 900.00 **Blue Mountain Community College**  
Purchase and install two additional access gates to community tennis courts at BMCC.
- 1,098.00 **Pendleton Babe Ruth Association**  
Purchase two sections of steel moveable bleachers.
- 1,100.00 **Pendleton Junior Soccer Association**  
Purchase soccer goals and nets for installation at Pendleton Junior High School soccer field.
- 5,000.00 **American Association of University Women, Pendleton Branch**  
Toward construction of handicapped access ramp to Vert Auditorium/Helen McCune Building complex.
- 2,500.00 **The Salvation Army, Pendleton Branch**  
Toward construction of new community center.
- 500.00 **Round-Up Hall of Fame**  
Assist in funding lay-out, art work and printing of two-color brochure to promote the City of Pendleton and the Hall of Fame.
- 1,500.00 **Lincoln School Parents**  
Toward construction of "Lincoln Log" playground complex.
- 1,000.00 **Pendleton Junior High Parent's Club**  
Toward purchase of Baldwin Hamilton piano for stage at new Junior High School.
- 1,250.00 **Pendleton Branch Library**  
Purchase of dual 8mm movie projector and a 16mm movie projector.
- 3,300.00 **Pendleton Senior Center**  
Purchase of automatic dishwasher.
- 2,500.00 **The Salvation Army, Pendleton Branch**  
Matching pledge toward construction of new community center.

1984

- 3,500.00 **American Association of University Women, Pendleton**  
Add'l grant toward construction of handicapped access ramp to Vert Auditorium/Helen McCune Building.
- 800.00 **Pendleton Parks, Recreation & Cemetery Depts.**  
Purchase spring animals for Roy Raley Park, park tree plantings and purchase approx. 20 trees for cemetery.
- 2,000.00 **Washington School PTA**  
Purchase of "Growing Big Toys" playground complex.
- 1,525.00 **Hawthorne School, People Involved in Education**  
Purchase backstop and backboard for playground.
- 2,000.00 **Knights of Pythias, Little League Program**  
Purchase riding lawn mower and storage shed.
- 325.00 **Pendleton Community Hospital**  
Purchase film "Duffy the Dragon" for pediatric patients and elementary school presentations.
- Pendleton Branch Library**
- 1,500.00 Purchase of adult records and children's records.
- 1,000.00 Purchase of high interest, low vocabulary books for adults and low vocabulary students.
- 1,444.50 Purchase 3 films and 28 books relating to adoptions, sexual activity by young people and teenage parents, for Boys & Girls Aid Society, Pendleton volunteers.
- 500.00 **Operation Blessing, Inc.**  
Purchase of a range for free meals program.
- 2,500.00 **Pendleton Foster Grandparents, Senior Companions Project.**  
Toward purchase of 12 passenger van for use by Pendleton volunteers.
- 2,500.00 **Blue Mountain Economic Development Council, Inc.**  
Toward purchase of a van for food-nutrition project.
- 950.00 **Nova Enterprises**  
Purchase a new motor for gang-rip for use in work experience programs.
- 517.00 **Umatilla County Health Department**  
Purchase of child car seats for new program called "Pendleton Car Seat Loan Program".
- 704.00 **Pendleton School District 16-R**  
Purchase folding tables for Hawthorne School Multi-purpose room.
- 2,000.00 **Pendleton Junior High School**  
Purchase portable outside bleachers for football and spring sports at new Junior High School.
- 3,000.00 **Blue Mountain Community College**  
For materials only to construct dug outs and storage sheds at American Legion Baseball facility.
- 1,738.00 **Blue Mountain Economical Development Council**  
Purchase one pallet jack.  
Purchase playground equipment for Headstart Program to be housed in John Murray School and accessi-

ble for children living on the South Hill.

- 500.00 **Pendleton Community Hospital**  
Purchase of video cassette player.
- Pendleton Firemans Fund**
- 325.00 Purchase of fire safety film for elementary school children.
- 200.00 Purchase of Kendrick extraction devise.
- 900.00 **Pendleton Jr. Livestock Show**  
Purchase materials only for constructions of livestock wash rack for location at Pendleton Round-Up grounds.

1985

- 1,750.00 **Pendleton American Legion Baseball**  
Material to construct a rest room at Blue Mountain College/Legion Baseball field
- 2,259.00 **Pendleton Babe Ruth Association**  
To purchase a tractor-mower.
- 600.00 **Blue Mountain Economic Development Council**  
Purchase of four scales to be used for food and nutrition programs.
- 4,200.00 **Pendleton Parks & Recreation Dept. & Cemetery**  
Renovation of shelters at Roy Raley Park
- 170.75 **Community Hospital - Center for Woman's Care**  
To purchase Resource Journals for nurses.
- 2,351.00 **Nova Enterprises**  
Purchase of video equipment.
- 300.00 **Pendleton "Helpline"**  
Purchase a "call diverter".
- 710.00 **Pendleton Fireman's Fund**  
Purchase of flammable liquids detector.
- 1,000.00 **Sherwood School Parent's Club**  
To erect playground equipment including bars, a slide, sliding pole.
- 2,500.00 **West Hills Parent's Club**  
For playground equipment - large wood structures.
- 1,300.00 **Parents & Teachers of Hawthorne School**  
To purchase curtain and valance for all-purpose room
- 4,790.00 **Pendleton Senior High School**  
Purchase of one roll-away bleacher for stage in gym.
- 2,000.00 **McKay School Physical Ed. Dept.**  
Develop unused slop adjacent to school into exercise course.
- 150.00 **St. Anthony's Hospital**  
For video film on Abduction prevention.
- 1,987.00 **Salvation Army, Pendleton Corps**  
Installing a sprinkler system for landscaping at Community Center.
- 1,500.00 **Pendleton Branch Library**  
Replacement of children's books

1986

- 3,980.00 **Umatilla County Historical Society**  
Purchase of 4 fire-rated filing cabinets.
- 1,016.00 **Umatilla County Health Department**  
Purchase of Child Car Seats for Pendleton Citizens.
- 5,700.00 **Pendleton Parks & Recreation Dept. & Cemetery**  
Renovate entrance to Olney Cemetery.
- 2,200.00 For new shower stalls at the city pool.
- 10,000.00 Completion of River Parkway from 18th to Highway 30.
- 3,000.00 For drinking fountain, picnic tables, BBQ's and landscaping in Murray Park.
- 2,000.00 **Pendleton Swim Association**  
Toward a new timing system, touch pads and scoreboard.
- 700.00 **Pendleton Little League**  
Purchase of materials for a new storage shed.
- 4,500.00 **Pendleton Senior High School**  
Toward a new curtain in the auditorium.
- 2,500.00 **Pendleton Branch Library**  
Purchase of TV & video-cassettes for children & parents.
- 325.00 Purchase of film on teenage pregnancy for Boys & Girls Aid Society, Pendleton volunteers.
- 903.20 **Umatilla County Historical Society**  
Purchase of 24 chairs, 3 folding tables and display case.
- 510.00 **American Red Cross**  
Purchase of Resusci-anne for Pendleton C.P.R. Program.
- 748.00 **Salvation Army Youth Center**  
Purchase "Rocket Hockey" table.
- 838.95 **Reach - Salvation Army Diversion Project**  
To purchase portable T.V. and V.C.R. for educational and recreational films.
- 1,000.00 **Pendleton Junior High School**  
Toward Student Achievement Recognition Program.
- 388.95 **Pendleton Police Department**  
Purchase V.C.R. and film on drunk driving for Youth Services Officer.
- 1,961.85 **Arts Council of Pendleton**  
Purchase 15 boards and standards.
- 1,375.00 **City of Pendleton**  
For Vert Auditorium, for benefit of Oregon East Symphony. Purchase 40 music stands and storage racks.
- 855.48 **American Assoc. of University Women, Pendleton Chapter**  
Toward Vert Ramp.



## Trust Committee Members Since 1939\*

1939	John F. Kilkenny, Chr. J. D. McKee James A. Fee	H. R. Brock Max Baer Roy W. Ritner, Sec.	Dr. H. J. Kavanaugh J. J. Hamley
1940	Creagh Brennan, Chr. H. R. Brock John F. Kilkenny	A. L. Koeppen Dr. H. J. Kavanaugh	Max Baer
1941	Creagh Brennan, Chr. A. L. Koeppen Max Baer	Dr. H. J. Kavanaugh John Kilkenny	J. D. McKee H. R. Brock
1942	Dr. H. J. Kavanaugh, Chr. Creagh Brennan John Kilkenny	H. R. Brock J. D. McKee Charles Griffin, Sec.	A. L. Koeppen Sam Gorfkle
1943-44	Dr. H. J. Kavanaugh, Chr. Creagh Brennan John Kilkenny	H. R. Brock J. D. McKee Charles Griffin, Sec.	A. L. Koeppen Sam Gorfkle
1945	A. K. Koeppen, Chr. Creagh Brennan Sam Gorfkle	J. D. McKee Dr. H. J. Kavanaugh	John F. Kilkenny H. R. Brock
1946	A. L. Koeppen, Chr. Creagh Brennan Sam Gorfkle	J. D. McKee Dr. H. J. Kavanaugh	John F. Kilkenny H. R. Brock
1947	A. L. Koeppen, Chr. Creagh Brennan Sam Gorfkle	J. D. McKee Dr. H. J. Kavanaugh	John F. Kilkenny H. R. Brock
1948	A. L. Koeppen, Chr. Creagh Brennan Sam Gorfkle	J. D. McKee Dr. H. J. Kavanaugh	John F. Kilkenny H. R. Brock
1949	A. K. Koeppen, Chr. Creagh Brennan Sam Gorfkle	H. R. Brock J.D. McKee	Dr. J. H. Kavanaugh B.D. Isaminger
1950	J. D. McKee, Chr. Bessie McCormmach Sam Gorfkie	A. L. Koeppen B.D. Isaminger	H. R. Brock Alfred F. Cunha

(\*no record available of members prior to 1939)

1951 J. D. McKee, Chr.  
Bessie McCormmach A. L. Koeppen H. R. Brock  
Sam Gorfkle B.D. Isaminger Alfred F. Cunha

1952 Alfred F. Cunha, Chr.  
Sam Gorfkle J. D. McKee B. D. Isaminger  
Bessie McCormmach Ruth Anne Mulligan J. David Hamley  
Charles E. Burnett, Sec.

1953 Alfred F. Cunha, Chr.  
Sam Gorfkle J. D. McKee B. D. Isaminger  
Bessie McCormmach Ruth Anne Mulligan J. David Hamley  
Charles E. Burnett, Sec.

1954 Alfred F. Cunha, Chr.  
Sam Gorfkle J. D. McKee B. D. Isaminger  
Bessie McCormmach Ruth Anne Mulligan J. David Hamley  
Charles E. Burnett, Sec.

1955 Alfred F. Cunha, Chr.  
Sam Gorfkle J. D. McKee B. D. Isaminger  
Bessie McCormmach Ruth Anne Mulligan J. David Hamley  
Charles E. Burnett, Sec.

1956 Alfred F. Cunha, Chr.  
Sam Gorfkle J. D. McKee B. D. Isaminger  
Bessie McCormmach Ruth Anne Mulligan J. David Hamley  
Charles E. Burnett, Sec.

1957 Alfred F. Cunha, Chr.  
Sam Gorfkle J. D. McKee B. D. Isaminger  
Bessie McCormmach Ruth Anne Mulligan J. David Hamley  
Charles E. Burnett, Sec.

1958 Alfred F. Cunha, Chr.  
John M. Carroll E. A. Fanshier Robert M. Sussman  
J. David Hamley Bessie McCormmach Ruth Anne Mulligan  
Charles E. Burnett, Sec.

1959 Alfred F. Cunha, Chr.  
John M. Carroll E. A. Fanshier Robert M. Sussman  
J. David Hamley Bessie McCormmach Ruth Anne Mulligan  
Charles E. Burnett, Sec.

1960 Alfred F. Cunha, Chr.  
E. A. Fanshier R. M. Sussman Bessie McCormmach  
Ruth Anne Mulligan J. David Hamley J. P. French  
Robert N. Funk, Sec.

1961 Alfred F. Cunha, Chr.  
E. A. Fanshier R. M. Sussman Bessie McCormmach  
Ruth Anne Mulligan J. David Hamley J. P. French  
Robert N. Funk, Sec.

1962 Alfred F. Cunha, Chr.  
E. A. Fanshier R. M. Sussman Bessie McCormmach  
Ruth Anne Mulligan J. David Hamley J. P. French  
Robert N. Funk, Sec.

1963 Alfred F. Cunha, Chr.  
E. A. Fanshier R. M. Sussman Bessie McCormmach  
Ruth Anne Mulligan J. David Hamley J. P. French  
Robert E. O'Rourke, Sec.

1964 Alfred F. Cunha, Chr.  
E. A. Fanshier R. M. Sussman Bessie McCormmach  
Ruth Anne Mulligan J. David Hamley J. P. French  
Robert E. R'Rourke, Sec.

1965 Alfred F. Cunha, Chr.  
E. A. Fanshier Robert M. Sussman Bessie McCormmach  
J. W. Forrester, Jr. J. David Hamley Dr. Jules F. Bittner  
Robert T. Mautz, Sec.

1966 Alfred F. Cunha, Chr.  
E. A. Fanshier Robert M. Sussman Bessie McCormmach  
J. W. Forrester, Jr. J. David Hamley Dr. Jules F. Bittner  
Robert T. Mautz, Sec.

1967 Alfred F. Cunha, Chr.  
E. A. Fanshier Robert M. Sussman Bessie McCormmach  
J. W. Forrester, Jr. J. David Hamley Dr. Jules F. Bittner  
Robert T. Mautz, Sec.

1968 Alfred F. Cunha, Chr.  
E. A. Fanshier Robert M. Sussman Bessie McCormmach  
J. W. Forrester, Jr. J. David Hamley Dr. Jules F. Bittner  
Raley Peterson, Sec.

1969 Dr. Jules F. Bittner, Chr.  
J. David Hamley A. L. Koeppen R. M. Sussman  
Bessie McCormmach E. A. Fanshier J. W. Forrester, Jr.  
Raley Peterson, Sec.

1970	Dr. Jules F. Bittner, Chr. J. David Hamley      A. L. Koeppen Bessie McCormmach   E. A. Fanshier Raley Peterson, Sec.	R. M. Sussman J. W. Forrester, Jr.	1980	Dr. John McBee, Chr. J. David Hamley      Richard Glenn Dr. J. F. Bittner      Robert Sussman Steven H. Corey, Sec.	Eva Wahl Pat Harcourt
1971	Dr. Jules F. Bittner, Chr. J. David Hamley      A. L. Koeppen Bessie McCormmach   E. A. Fanshier Raley Peterson, Sec.	R. M. Sussman J. W. Forrester, Jr.	1981	Richard Glenn, Chr. Dr. John McBee      Dr. J. F. Bittner J. David Hamley      Ken Jackson Steven H. Corey, Sec.	Eva Wahl Pat Harcourt
1972	Dr. Jules F. Bittner, Chr. J. David Hamley      A. L. Koeppen Bessie McCormmach   E. A. Fanshier Raley Peterson, Sec.	R. M. Sussman J. W. Forrester, Jr.	1982	Richard Glenn, Chr. J. David Hamley      Dr. John McBee Dr. J. F. Bittner      Ken Jackson Steven H. Corey, Sec.	Eva Wahl Pat Harcourt
1973	Dr. J. F. Bittner, Chr. J. David Hamley      R. M. Sussman Dr. John McBee      Eva Wahl Raley Peterson, Sec.	E. A. Fanshier Richard Glenn	1983	Pat Harcourt, Chr. J. David Hamley      Richard Glenn Dr. J. F. Bittner      Ken Jackson Steven H. Corey, Sec.	Eva Wahl Dr. John McBee
1974	Dr. J. F. Bittner, Chr. J. David Hamley      R. M. Sussman Dr. John McBee      Eva Wahl Steven H. Corey, Sec.	E. A. Fanshier Richard Glenn	1984	Pat Harcourt, Chr. J. David Hamley      Richard Glenn Dr. J. F. Bittner      Ken Jackson Steven H. Corey, Sec.	Eva Wahl Dr. John McBee
1975	J. David Hamley, Chr. Dr. J. F. Bittner      Robert Sussman Richard Glenn      Eva Wahl Steven H. Corey, Sec.	E. A. Fanshier Dr. John McBee	1985	Dr. J. F. Bittner, Chr. Dr. John McBee      Richard Glenn Ken Jackson      Pat Harcourt Steven H. Corey, Sec.	Eva Wahl LaVelle Bonbright
1976	J. David Hamley, Chr. Dr. J. F. Bittner      Robert Sussman Richard Glenn      Eva Wahl Steven H. Corey, Sec.	E. A. Fanshier Dr. John McBee	1986	Dr. J. F. Bittner, Chr. Dr. John McBee      Richard Glenn Ken Jackson      Pat Harcourt Steven H. Corey, Sec.	Eva Wahl LaVelle Bonbright
1977	Eva Wahl, Chr. J. David Hamley      Richard Glenn Dr. J. F. Bittner      Robert Sussman Steven H. Corey, Sec.	E. A. Fanshier Dr. John McBee			
1978	Eva Wahl, Chr. J. David Hamley      Richard Glenn Dr. J. F. Bittner      Robert Sussman Steven H. Corey, Sec.	E. A. Fanshier Dr. John McBee			
1979	Dr. John McBee, Chr. J. David Hamley      Richard Glenn Dr. J. F. Bittner      Robert Sussman Steven H. Corey, Sec.	E. A. Fanshier Eva Wahl			